



Rethink Thread Repair.
Think Recoil®



Watch the demo

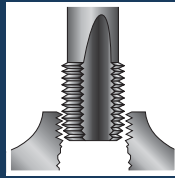
www.recoiltools.com.au



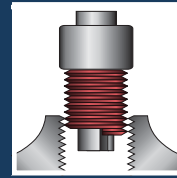
STRIPPED



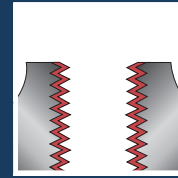
DRILL



TAP



INSTALL



FIXED

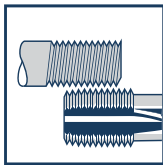


1 DRILL:

Drill to clear out the damaged thread with drill size as specified on kit (if necessary).



Standard Drill



2 CHECK:

Ensure tap thread matches bolt.



Recoil[®] STI Tap



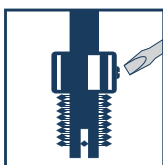
3 TAP HOLE:

Place tap into tap wrench or use the square drive in the installation tool provided*. Tap hole to the required depth using correct procedures (if unsure contact your dealer).



Recoil[®] STI Tap

*Square drive tool only suitable for tapping non-ferrous alloys.

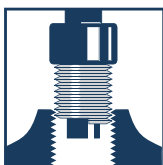


4 SET TOOL:

Place insert on installation tool, positioning the adjustable top so that the insert tang is centred in the tang slot.



Recoil[®] Installation Tool

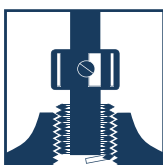


5 INSTALL:

Wind insert in with light downward pressure until 1/4 to 1/2 turn below the surface.



Recoil[®] Wire Thread Inserts



6 TANG REMOVAL:

Do not attempt to twist tang off with tool. Lift tool from tang, turn tool 90° and tap down sharply. Use tang break-off tool where supplied. For spark plug and large fine thread inserts, use long nose pliers to pull tang out.



Recoil[®] Tang Break Tool



Thread Repair Kits



Everything you need for complete thread repair in one handy case. Trade Series kits include only the best quality HSS taps which make them suitable for aluminium, magnesium, cast iron and most machinable steels. Includes easy to follow instructions.

Contents:

- HSS Drill Bit*
- HSS Intermediate STI Tap
- Thread Inserts
- Installation Tool
- Magnetic Tang Removal Tool*
- Installation Instructions

*Included only on selected sizes (up to and including M12 and 1/2")



Size	Pitch	Item #
Metric		
M12	1.5	RC37123
M14	1.5	RC37143
M25	1.5	RC38250
Metric - Inc. Drill		
M6 - M14		RC37007R
M5, M6, M8, M10, M12		RC37009R
Metric (Left Handed) - Inc. Drill		
M6	1	RC35068LH
M8	1.25	RC35088LH
M10	1.5	RC35108LH
M12	1.75	RC35128LH
M10	1.25	RC37108LH
Metric Coarse		
M3	0.5	RC35038
M4	0.7	RC35048
M5	0.8	RC35058
M6	1	RC35068
M7	1	RC35078
M8	1.25	RC35088
M9	1.25	RC35098
M10	1.5	RC35108
M11	1.5	RC35118
M12	1.75	RC35128
M14	2	RC35148
M16	2	RC35168
M18	2.5	RC35188
M20	2.5	RC35208
M22	2.5	RC35220
M24	3	RC35240
M27	3	RC35270
M30	3.5	RC35300
M30	3	RC353003
M33	3.5	RC35330
M36	4	RC35360
M39	4	RC35390
M42	4.5	RC35420
M42	4	RC354204
M45	4.5	RC35450
Metric Coarse - Inc. Drill		
M2.2	0.45	RC35018
M2	0.4	RC35028
M13	1.75	RC35138
M15	2	RC35158

Size	Pitch	Item #
M2.5	0.45	RC35258
M3.5	0.6	RC35358 ▲
Metric Extra Fine		
M8	0.75	RC38080 ▲
M10 x 6.8mm	1	RC38102
M10	1	RC38108
M11	1	RC38110
M12	1.25	RC38128
M13	1.25	RC38138
M14	1.25	RC38147
M14	1.25	RC381481
M18	1.5	RC381881
M18 Inconel	1.5	RC381881X
M20	1.5	RC38208
M22	1.5	RC38220
M24	1.5	RC38240
M26	1.5	RC38260
M27	1.5	RC38270
M30	1.5	RC38300
M36	1.5	RC38360
M39	2	RC38390 ▲
M42	2	RC38420 ▲
Metric Extra Fine - Inc. Drill		
M11	1	RC38118
M12	1	RC381201
Metric Medium		
M8	1	RC37088
M10	1.25	RC37103
M10	1.25	RC37108
M14	1.5	RC37148
M15	1.5	RC37158
M16	1.5	RC37168
M18	2	RC37188
M20	2	RC37208
M22	2	RC37220
M24	2	RC37240
M27	2	RC37270
M30	2	RC37300
M33	2	RC37330
M36	3	RC37360
M39	3	RC37390 ▲
M42	3	RC37420 ▲

Thread Repair Kits



Everything you need for complete thread repair in one handy case. Trade Series kits include only the best quality HSS taps which make them suitable for aluminium, magnesium, cast iron and most machinable steels. Includes easy to follow instructions.

Contents:

- HSS Drill Bit*
- HSS Intermediate STI Tap
- Thread Inserts
- Installation Tool
- Magnetic Tang Removal Tool*
- Installation Instructions

*Included only on selected sizes (up to and including M12 and 1/2")



Size	Pitch	Item #
Metric Medium - Inc. Drill		
M6	0.75	RC37060
M9	1	RC37098
M11	1.25	RC37118
M12	1.5	RC37128
M13	1.5	RC37138
BA - Inc. Drill		
BA 0		RC30508
BA 2		RC30528
BA 4		RC30548
BA 6		RC30568
BSC - Inc. Drill		
BSC 5/16	26	RC36508
BSC 3/8	26	RC36608
BSC 7/16	26	RC36708
BSC 1/2	26	RC36808
BSF		
BSF 9/16	16	RC30098
BSF 5/8	14	RC30108
BSF 3/4	12	RC30128
BSF 7/8	11	RC30140
BSF 1	10	RC30160
BSF 1 1/4	9	RC30200
BSF - Inc. Drill		
BSF 3/16	32	RC30038
BSF 1/4	26	RC30048
BSF 5/16	2	RC30058
BSF 3/8	20	RC30068
BSF 7/16	18	RC30078
BSF 1/2	16	RC30088
BSP		
BSP 1/8	28	RC31028
BSP 1/4	19	RC31048
BSP 3/8	19	RC31068
BSP 1/2	14	RC31080
BSP 5/8	14	RC31100
BSP 3/4	14	RC31120
BSP 1	11	RC31160
BSW		
BSW 1/2	12	RC32088
BSW 9/16	12	RC32098
BSW 5/8	11	RC32108

Size	Pitch	Item #
BSW 3/4	10	RC32128
BSW 7/8	9	RC32140
BSW 1	8	RC32160
BSW 1 1/8	7	RC32180 ▲
BSW 1 1/4	7	RC32200 ▲
BSW 1 3/8	6	RC32220 ▲
BSW 1 1/2	6	RC32240 ▲
BSW - Inc. Drill		
BSW 1/8	40	RC32028
BSW 3/16	24	RC32038
BSW 1/4	20	RC32048
BSW 5/16	18	RC32058
BSW 3/8	16	RC32068
BSW 7/16	14	RC32078
NC (Left Handed) - Inc. Drill		
NC 5/16	18	RC33058LH
NC 3/8	16	RC33068LH
NC 7/16	14	RC33078LH
NPT		
NPT 1/2	14	RC36080
NPT 3/4	14	RC36120
NPT - Inc. Drill		
NPT 1/8	27	RC36028
NPT 1/4	18	RC36048
NPT 3/8	18	RC36068
UN		
UN 7/8	12	RC3414012
UN 7/8	2	RC3414020
UN 1 1/8	8	RC36180 ▲
UN 1 1/4	8	RC36200 ▲
UN 1 3/8	8	RC36220 ▲
UN 1 1/2	8	RC36240 ▲
UN 1 5/8	8	RC36260 ▲
UN 1 3/4	8	RC36280 ▲
UN 1 7/8	8	RC36300 ▲
UN 2	8	RC36320 ▲
UN - Inc. Drill		
UN 1/4	24	RC3404824
UN 7/16	1	RC3407816

Thread Repair Kits



Everything you need for complete thread repair in one handy case. Trade Series kits include only the best quality HSS taps which make them suitable for aluminium, magnesium, cast iron and most machinable steels. Includes easy to follow instructions.

Contents:

- HSS Drill Bit*
- HSS Intermediate STI Tap
- Thread Inserts
- Installation Tool
- Magnetic Tang Removal Tool*
- Installation Instructions

*Included only on selected sizes (up to and including M12 and 1/2")



Size	Pitch	Item #
UNC		
UNC 1/4	20	RC33048
UNC 5/16	18	RC33058
UNC 3/8	16	RC33068
UNC 7/16	14	RC33078
UNC 1/2	13	RC33088
UNC 9/16	12	RC33098
UNC 5/8	11	RC33108
UNC 11/16	11	RC33110 ▲
UNC 3/4	10	RC33128
UNC 7/8	9	RC33140
UNC 1	8	RC33160
UNC 1 1/8	7	RC33180
UNC 1 1/4	7	RC33200
UNC 1 3/8	6	RC33220
UNC 1 1/2	6	RC33240
UNC #8	32	RC33588
UNC #10	24	RC33608
UNC #12	24	RC33628
UNC - Inc. Drill		
UNC 2	56	RC33528
UNC 3	48	RC33538
UNC 4	40	RC33548
UNC 5	40	RC33558
UNC 6	32	RC33568
UNC (Left Handed)		
UNC 1/2	13	RC33088LH
UNC (Left Handed) - Inc. Drill		
UNC 1/4	20	RC33048LH
UNEF		
UNEF 9/16	20	RC3409020
UNEF 1	18	RC3416018 ▲
UNEF 1	20	RC3416020
UNEF - Inc. Drill		
UNEF 7/16	24	RC3407824
UNF		
UNF 1/4	28	RC34048
UNF 5/16	24	RC34058
UNF 3/8	24	RC34068
UNF 7/16	20	RC34078
UNF 1/2	20	RC34088
UNF 9/16	18	RC34098

Size	Pitch	Item #
UNF 5/8	18	RC34108
UNF 3/4	16	RC34128
UNF 7/8	14	RC34140
UNF 1	12	RC34160
UNF 1 1/16	12	RC34170 ▲
UNF 1 1/8	12	RC34180
UNF 1 1/4	12	RC34200
UNF 1 3/8	12	RC34220
UNF 1 1/2	12	RC34240
UNF 3	56	RC34538
UNF #10 - 32		RC34608
UNF - Inc. Drill		
UNF 4	48	RC34548
UNF 6	40	RC34568
UNF 8	36	RC34588
UNF 12 - 28		RC34628
UNS		
UNS 1	14	RC3416014
Pilot Nose Tap Kits - Inc. Drill		
M6	1	RC35063
Pilot Nose Tap Kits		
M8	1.25	RC35083
M12	1.75	RC35123
Cummins Head Bolt		
11/16	16	RC3411816
Bike Crank		
9/16 Left	20	RC3409820BCL
9/16 Right	20	RC3409820BCR
Brake Caliber Kit		
M9	1.25	RC35093S
Sump Plug Kit		
M14	1.5	RC37143S

Thread Repair Kits Spark Plug Kits



RECOIL™s Spark Plug thread repair kits enable you to carry out fast and efficient repair of damaged or stripped threads.

RECOIL™ inserts are rolled from high quality stainless steel wire with a diamond shaped cross section, wound to the shape of a spring thread. Once the insert is installed into a tapped hole, it provides a permanent and wear resistant thread in the parent material designed to be stronger than the original thread.

The inserts are greater in diameter than the corresponding tapped hole and compress as they are installed. This allows maximum surface contact area with the tapped thread, safely and permanently anchoring the inserts into place.

The inserts compensatory action shares the load over the entire bolt and hole, increasing holding or pull out strength. With a RECOIL™ insert in place, load and stress are more evenly distributed.

- Everything you need for complete thread repair in one handy case
- Trade Series kits include only the best quality HSS taps
- Suitable for aluminium, magnesium, cast iron and most machinable steels
- Inserts rolled from high quality Stainless Steel



Size	Pitch	Item #
Spark Plug Kit - Trade Series		
M10	1	RC381082
M12	1.25	RC381202
M14	1.25	RC381482
M18	1.5	RC38188
Spark Plug Kit - Standard Series		
M14	1.25	RC38140

Size	Pitch	Item #
Plug Saver Kit		
M14	1.25	RC38148
M14	1.25	RC98147RP
Ford Triton F250		RC98140T
Expanding Tool		RC98146

Range Kits



RECOIL™ Range Kits contain a selection of RECOIL™'s most popular sizes. It provides you with an all-in-one workshop solution for multi-diameter thread repairs. It's ideal for garages and other workshops where thread repairs are often undertaken.

Inserts are rolled from high quality stainless steel wire with a diamond shaped cross section, wound to the shape of a spring thread. Selection of RECOIL™'s most popular sizes in a handy storage case.

Standard Kit Contents:

- Drill Bit*
- HSS Intermediate STI Taps
- Quantity of inserts 1.5D length
- Combo Tap Drive and Installation Tool*
- Magnetic Tang Break Tool*
- Installation Instructions

*Kit contents differ depending on thread form and diameters.



Size	Pitch	Item #
Metric		
M6 M8 x 1.25, M10 x 1.5, M12 x 1.75, M14 x 1.25		RC33005R
M4, M5, M6, M8 x 1.25		RC33007R
M4, M5, M6, M8, M10		RC35003R
M5 - M12		RC35004R
M6 - M16		RC35005R
M3, M4, M5, M6, M8		RC35006R
M6, M8, M10 Mini	1.25	RC37002
M8 x 1, M10 x 1, M10 x 1.25, M12 x 1.25, M12 x 1.5		RC37000R
M6, 8-1.25, 10-1.5, 12-1.75, 14-2		RC37003R
M4, 6, 8-1.25, 10-1.5, 12-1.75		RC37004R
M6 - M14		RC38006R
Metric Fine		
		RC37008
BA		
BA 0 - 6		RC30504R
BSC		
BSC 1/4, 5/16, 3/8, 7/16, 1/2		RC36001R
BSF		
BSF 1/4 - 1/2		RC30004R

Size	Pitch	Item #
BSP		
BSP 1/8, 1/4, 3/8		RC31004R
BSW		
BSW 1/4 - 1/2		RC32004R
NPT		
NPT 1/8, 1/4, 3/8, 1/2		RC36004R
UNC		
UNC 1/4, 5/16, 3/8		RC33001R
UNC 1/4 - 1/2		RC33004R
UNF		
4-40, 6-32, 8-32, 10-24 UNC & 10-32 UNF		RC33002R
UNF 1/4, 5/16, 3/8		RC34001R
UNF 1/4 - 1/2		RC34004R
Popular Sizes		
9/16, M10 x 6.8		RC34005
6, 8, 9, 10, 12	1.5	RC35007R
Bike Crank		
1/4 - 24 & 7/16 - 16 Harley 3/8-20 BSF		RC34008R
5 x 9/16 - 20 x 1/2" Left Hand & Right Hand Inserts		RC3409620

Inserts Free Running Tanged - Packets



RECOIL™ helically wound wire thread inserts can be used to strengthen threads, giving applications a longer life. With a RECOIL™ insert installed, a more even distribution of load and stress can be achieved. Each insert sharing the load over the entire bolt and hole, improving holding or pull out resistance. RECOIL™ inserts are made of type 304 stainless steel wire rolled into a diamond shape cross-section.

Made from Stainless Steel.

Work-hardened to a tensile strength above 200,000 psi.

FOD-Free Design: No tangs to break off, retrieve or lose.



Size	Cut	Pitch	Pack	Item #
Metric Coarse - Packet				
M2.2	1.5D	1.5	10	RC25013
M2	1D	0.4	10	RC25022
M2	1.5D	0.4	10	RC25023
M2	2D	0.4	10	RC25024
M3	1D	0.5	10	RC25032
M3	1.5D	0.5	10	RC25033
M3	2D	0.5	10	RC25034
M4	1D	0.7	10	RC25042
M4	1.5D	0.7	10	RC25043
M4	2D	0.7	10	RC25044
M5	1D	0.8	10	RC25052
M5	1.5D	0.8	10	RC25053
M5	2D	0.8	10	RC25054
M6	1D	1	10	RC25062
M6	1.5D	1	10	RC25063
M6	2D	1	10	RC25064
M6	2.5D	1	10	RC25065
M7	1D	1	10	RC25072
M7	1.5D	1	10	RC25073
M7	2D	1	10	RC25074
M8	1D	1.25	10	RC25082
M8	1.5D	1.25	10	RC25083
M8	2D	1.25	10	RC25084
M8	2.5D	1.25	10	RC25085
M9	1D	1.25	10	RC25092
M9	1.5D	1.25	10	RC25093
M10	1D	1.5	10	RC25102
M10	1.5D	1.5	10	RC25103
M10	2D	1.5	10	RC25104
M10	2.5D	1.5	10	RC25105
M11	1D	1.5	10	RC25112
M11	1.5D	1.5	10	RC25113
M12	1D	1.75	10	RC25122
M12	1.5D	1.75	10	RC25123
M12	2D	1.75	10	RC25124
M13	1.5D	1.75	5	RC25133
M14	1D	2	5	RC25142
M14	1.5D	2	5	RC25143
M14	2D	2	5	RC25144
M15	1.5D	2	5	RC25153
M16	1D	2	5	RC25162
M16	1.5D	2	5	RC25163
M16	2D	2	5	RC25164
M16	2.5D	2	5	RC25165
M18	10D	2.5	5	RC25182

Size	Cut	Pitch	Pack	Item #
M18	1.5D	2.5	5	RC25183
M20	1.5D	2.5	5	RC25203
M22	1.5D	2.5	3	RC25223
M24	1.5D	3	3	RC25243
M2.5	1.5D	0.45	10	RC25253
M2.5	2D	0.45	10	RC25254
M30	1.5D	3.5	1	RC25303
M3.5	1.5D	0.6	10	RC25353
Metric Coarse (Left Handed) - Packet				
M6	1.5D	1	10	RC25063LH
M8	1.5D	1.25	10	RC25083LH
M10	1.5D	1.5	10	RC25103LH
M12	1.5D	1.75	10	RC25123LH
Metric Medium - Packet				
M8	1D	1	10	RC27082
M8	1.5D	1	10	RC27083
M8	2D	1	10	RC27084
M9	1.5D	1	10	RC27093
M10	1D	1.25	10	RC27102
M10	1.5D	1.25	10	RC27103
M10	2D	1.25	10	RC27104
M10	3D	1.25	10	RC27106
M11	1.5D	1.25	10	RC27113
M12	1D	1.5	10	RC27122
M12	1.5D	1.5	10	RC27123
M12	2D	1.5	10	RC27124
M13	1.5D	1.5	5	RC27133
M14	1D	1.5	5	RC27142
M14	1.5D	1.5	5	RC27143
M14	2D	1.5	5	RC27144
M15	1.5D	1.5	5	RC27153
M16	1D	1.5	5	RC27162
M16	1.5D	1.5	5	RC27163
M16	2D	1.5	5	RC27164
M16	2.5D	1.5	5	RC27165
M18	1.5D	2	5	RC27183
M20	1.5D	2	5	RC27203
M22	1.5D	2	3	RC27223
M24	1.5D	2	3	RC27243
Metric (Left Handed) - Packet				
M10	1D	1	10	RC28102
M10	1.5D	1	10	RC28103
M10	2D	1	10	RC28104

Size	Cut	Pitch	Pack	Item #
M10 x 6.8		1	10	RC28107
M10 x 0.339		1	10	RC28108
M10 x 1/2		1	10	RC28109
M11	1.5D	1	10	RC28113
M12	1D	1.25	10	RC28122
M12	1.5D	1.25	10	RC28123
M12	2D	1.25	10	RC28124
M13	1.5D	1.25	10	RC28133
M14 x 3/4		1.25	10	RC28140
M14 x 7/1		1.25	10	RC28147
M14 x 3/8		1.25	10	RC28148
M14 x 1/2		1.25	10	RC28149
M18	1.5D	1.5	5	RC28183
M18	1.5D	1.5	5	RC28189
M20	1.5D	1.5	5	RC28203
M22	1.5D	1.5	3	RC28223
M24	1.5D	1.5	3	RC28243
M26	1.5D	1.5	1	RC28263
BSF - Packet				
BSF 3/16	1D	32	10	RC20032
BSF 3/16	1.5D	32	10	RC20033
BSF 3/16	2D	32	10	RC20034
BSF 1/4	1D	26	10	RC20042
BSF 1/4	1.5D	26	10	RC20043
BSF 5/16	1D	22	10	RC20052
BSF 5/16	1.5D	22	10	RC20053
BSF 5/16	2D	22	10	RC20054
BSF 3/8	1D	20	10	RC20062
BSF 3/8	1.5D	20	10	RC20063
BSF 3/8	2D	20	10	RC20064
BSF 7/16	1D	18	10	RC20072
BSF 7/16	1.5D	18	10	RC20073
BSF 7/16	2D	18	10	RC20074
BSF 1/2	1D	16	10	RC20082
BSF 1/2	1.5D	16	10	RC20083
BSF 1/2	2D	16	10	RC20084
BSF 9/16	1.5D	16	5	RC20093
BSF 5/8	1.5D	14	5	RC20103
BSF 3/4	1.5D	12	5	RC20123
BSF 7/8	1.5D	11	3	RC20143
BSF 1	1.5D	10	3	RC20163

Inserts Free Running Tanged - Packets



RECOIL™ helically wound wire thread inserts can be used to strengthen threads, giving applications a longer life. With a RECOIL™ insert installed, a more even distribution of load and stress can be achieved. Each insert sharing the load over the entire bolt and hole, improving holding or pull out resistance. RECOIL™ inserts are made of type 304 stainless steel wire rolled into a diamond shape cross-section.

Made from Stainless Steel.

Work-hardened to a tensile strength above 200,000 psi.

FOD-Free Design: No tangs to break off, retrieve or lose.



Size	Cut	Pitch	Pack	Item #
UN - Packet				
UN 1/4	1.5D	24	10	RC2404324
UN 7/16	1.5D	16	10	RC2407316
UN 1 5/8	1.5D	8		RC26263
UNC - Packet				
UNC 1/4	1D	20	10	RC23042
UNC 1/4	1.5D	20	10	RC23043
UNC 1/4	2D	20	10	RC23044
UNC 5/16	1D	18	10	RC23052
UNC 5/16	1.5D	18	10	RC23053
UNC 5/16	2D	18	10	RC23054
UNC 3/8	1D	16	10	RC23062
UNC 3/8	1.5D	16	10	RC23063
UNC 3/8	2D	16	10	RC23064
UNC 7/16	1D	14	10	RC23072
UNC 7/16	1.5D	14	10	RC23073
UNC 1/2	1D	13	10	RC23082
UNC 1/2	1.5D	3	10	RC23083
UNC 9/16	1.5D	12	5	RC23093
UNC 5/8	1D	11	5	RC23102
UNC 5/8	1.5D	11	5	RC23103
UNC 11/16	1.5D	11	5	RC23113
UNC 3/4	1D	10	5	RC23122
UNC 3/4	1.5D	10	5	RC23123
UNC 7/8	1.5D	9	3	RC23143
UNC 1	1.5D	8	3	RC23163
UNC 1 1/8	1D	7	1	RC23182

Size	Cut	Pitch	Pack	Item #
UNC 1 1/8	1.5D	7	1	RC23183
UNC 1 1/4	1D	7	1	RC23202
UNC 1 1/4	1.5D	7	1	RC23203
UNC 1 3/8	1.5D	6	1	RC23223
UNC 1 1/2	1D	6	1	RC23242
UNC 1 1/2	1.5D	6	1	RC23243
UNC 2	1D	56	10	RC23522
UNC 2	1.5D	56	10	RC23523
UNC 2	2D	56	10	RC23524
UNC 3	1.5D	48	10	RC23533
UNC 4	1D	40	10	RC23542
UNC 4	1.5D	40	10	RC23543
UNC 4	2D	40	10	RC23544
UNC 5	1D	40	10	RC23552
UNC 5	1.5D	40	10	RC23553
UNC 5	2D	40	10	RC23554
UNC 6	1D	32	10	RC23562
UNC 6	1.5D	32	10	RC23563
UNC 6	2D	32	10	RC23564
UNC 8	1D	32	10	RC23582
UNC 8	1.5D	32	10	RC23583
UNC 8	2D	32	10	RC23584
UNC 10	1D	24	10	RC23602
UNC 10	1.5D	24	10	RC23603
UNC 10	2D	24	10	RC23604
UNC 12	1D	24	10	RC23622
UNC 12	1.5D	24	10	RC23623

Size	Cut	Pitch	Pack	Item #
UNEF - Packet				
UNEF 1/4	1.5D	32	10	RC2404332
UNS - Packet				
UNS 1	1.5D	14	3	RC2416314
Spark Plug - Packet				
M14 x 12.4		1.25	5	RC28140124
M14 x 16.4		1.25	5	RC28140164
M14 x 8.4		1.25	5	RC2814084
M14	1.5D	1.25	5	RC28143125
Cummins Head Bolt - Packet				
11/16			3	RC2411016125

Inserts Free Running Tanged - Bulk



RECOIL™ helically wound wire thread inserts can be used to strengthen threads, giving applications a longer life. With a RECOIL™ insert installed, a more even distribution of load and stress can be achieved. Each insert sharing the load over the entire bolt and hole, improving holding or pull out resistance. RECOIL™ inserts are made of type 304 stainless steel wire rolled into a diamond shape cross-section.

Made from Stainless Steel.

Work-hardened to a tensile strength above 200,000 psi.

FOD-Free Design: No tangs to break off, retrieve or lose.



Size	Cut	Pitch	Qty	Item #
Metric Coarse - Bulk				
M2.2	2.5D	0.45	100	RC05015
M2.2	3D	0.45	100	RC05016
M2	1D	0.4	100	RC05022
M2	1.5D	0.4	100	RC05023
M2	2D	0.4	100	RC05024
M2	2.5D	0.4	100	RC05025
M2	3D	0.4	100	RC05026
M3	1D	0.5	100	RC05032
M3	1.5D	0.5	100	RC05033
M3	2D	0.5	100	RC05034
M3	3D	0.5	100	RC05036
M4	1D	0.7	100	RC05042
M4	1.5D	0.7	100	RC05043
M4	2D	0.7	100	RC05044
M4	2.5D	0.7	100	RC05045
M5	1D	0.8	100	RC05052
M5	1.5D	0.8	100	RC05053
M5	2D	0.8	100	RC05054
M6	1D	1	100	RC05062
M6	1.5D	1	100	RC05063
M6	2D	1	100	RC05064
M6	2.5D	1	100	RC05065
M6	3D	1	100	RC05066
M7	1D	1	100	RC05072
M7	1.5D	1	100	RC05073
M7	2D	1	100	RC05074
M7	2.5D	1	100	RC05075
M7	3D	1	100	RC05076
M8	1D	1.25	100	RC05082
M8	1.5D	1.25	100	RC05083
M8	2D	1.25	100	RC05084
M8	3D	1.25	100	RC05086
M9	1D	1.25	100	RC05092
M9	1.5D	1.25	100	RC05093
M9	2D	1.25	100	RC05094
M9	2.5D	1.25	100	RC05095
M9	3D	1.25	100	RC05096
M10	1D	1.5	100	RC05102
M10	1.5D	1.5	100	RC05103
M10	2D	1.5	100	RC05104
M10	2.5D	1.5	100	RC05105
M10	3D	1.5	100	RC05106
M11	1D	1.5	100	RC05112
M11	1.5D	1.5	100	RC05113
M11	2D	1.5	100	RC05114
M11	2.5D	1.5	100	RC05115
M11	3D	1.5	100	RC05116
M12 x 15		1.75	100	RC0512015
M12	2D	1.75	100	RC05124
M12	2.5D	1.75	100	RC05125
M12	3D	1.75	100	RC05126

Size	Cut	Pitch	Qty	Item #
M13	1D	1.75	50	RC05132
M13	1.5D	1.75	50	RC05133
M13	2D	1.75	50	RC05134
M13	3D	1.75	50	RC05136
M14	1D	2	50	RC05142
M14	1.5D	2	50	RC05143
M14	2D	2	50	RC05144
M14	2.5D	2	50	RC05145
M14	3D	2	50	RC05146
M15	1D	2	50	RC05152
M15	1.5D	2	50	RC05153
M15	2D	2	50	RC05154
M15	2.5D	2	50	RC05155
M15	3D	2	50	RC05156
M16 x 20		2	50	RC0516020
M16	1D	2	50	RC05162
M16	1.5D	2	50	RC05163
M16	2D	2	50	RC05164
M16	2.5D	2	50	RC05165
M16	3D	2	50	RC05166
M18	1D	2.5	50	RC05182
M18	1.5D	2.5	50	RC05183
M18	2D	2.5	50	RC05184
M18	2.5D	2.5	50	RC05185
M18	3D	2.5	50	RC05186
M20 x 25		2.5	25	RC0520025
M20	1D	2.5	25	RC05202
M20	1.5D	2.5	25	RC05203
M20	2D	2.5	25	RC05204
M20	2.5D	2.5	25	RC05205
M20	3D	2.5	25	RC05206
M22	1D	2.5	25	RC05222
M22	1.5D	2.5	25	RC05223
M22	2D	2.5	25	RC05224
M22	2.5D	2.5	25	RC05225
M22	3D	2.5	25	RC05226
M2.3	1D	0.45	100	RC05232
M2.3	1.5D	0.45	100	RC05233
M2.3	2D	0.45	100	RC05234
M24	1D	3	25	RC05242
M24	1.5D	3	25	RC05243
M24	2D	3	25	RC05244
M24	2.5D	3	25	RC05245
M24	3D	3	25	RC05246
M2.5	1D	0.45	100	RC05252
M2.5	1.5D	0.45	100	RC05253
M2.5	2D	0.45	100	RC05254
M2.5	2.5D	0.45	100	RC05255
M2.5	3D	0.45	100	RC05256
M2.6	1D	0.45	100	RC05262
M2.6	1.5D	0.45	100	RC05263
M2.6	2D	0.45	100	RC05264

Size	Cut	Pitch	Qty	Item #
M2.6	2.5D	0.45	100	RC05265
M2.6	3D	0.45	100	RC05266
M27	1D	3	10	RC05272
M27	1.5D	3	10	RC05273
M27	2D	3	10	RC05274
M27	2.5D	3	10	RC05275
M27	3D	3	10	RC05276
M30	1D	3.5	10	RC05302
M30	1.5D	3.5	10	RC05303
M30	2D	3.5	10	RC05304
M30	2.5D	3.5	10	RC05305
M30	3D	3.5	10	RC05306
M33	1D	3.5	10	RC05332
M33	1.5D	3.5	10	RC05333
M33	2D	3.5	10	RC05334
M33	2.5D	3.5	10	RC05335
M33	3D	3.5	10	RC05336
M3.5	1D	0.6	100	RC05352
M3.5	2.5D	0.6	100	RC05355
M3.5	3D	0.6	100	RC05356
M36	1D	4	10	RC05362
M36	1.5D	4	10	RC05363
M36	2D	4	10	RC05364
M36	2.5D	4	10	RC05365
M36	3D	4	10	RC05366
M39	1D	4	10	RC05392
M39	1.5D	4	10	RC05393
M39	2D	4	10	RC05394
M42	1D	4.5	10	RC05422
M42	1.5D	4.5	10	RC05423
M42	2D	4.5	10	RC05424
M45	1.5D	4.5	10	RC05453
M48	1.5D	5	10	RC05483
M48	2D	5	10	RC05484
M52	1.5D	5	10	RC05523
M15	3D	1.5	50	RC07156
M24 x 12		2	25	RC0724012
M18 x 3/4		1.5	50	RC08180
M18	0.5D	1.5	50	RC0818005D
M12	1D	1.75	100	RC05122
M12	1.5D	1.75	100	RC05123
Metric Coarse (Left Handed) - Bulk				
M6	1.5D	1	100	RC05063LH
M8	1.5D	1.25	100	RC05083LH
M10	1.5D	1.5	100	RC05103LH
M10	2D	1.5	100	RC05104LH ▲
M12		1.75	100	RC05123LH
M12	2D	1.75	100	RC05124LH ▲
M16	2D	2	50	RC05164LH
M18	1.5D	2.5	50	RC05183LH

Inserts Free Running Tanged - Bulk



RECOIL™ helically wound wire thread inserts can be used to strengthen threads, giving applications a longer life. With a RECOIL™ insert installed, a more even distribution of load and stress can be achieved. Each insert sharing the load over the entire bolt and hole, improving holding or pull out resistance. RECOIL™ inserts are made of type 304 stainless steel wire rolled into a diamond shape cross-section.

Made from Stainless Steel.

Work-hardened to a tensile strength above 200,000 psi.

FOD-Free Design: No tangs to break off, retrieve or lose.



Size	Cut	Pitch	Qty	Item #
BA - Bulk				
Screw #0	3D		100	RC00506
Screw #2	1.5D		100	RC00523
Screw #2	1D		100	RC00522
Screw #2	2.5D		100	RC00525
Screw #2	2D		100	RC00524
Screw #2	3D		100	RC00526
Screw #4	1.5D		100	RC00543
Screw #4	1D		100	RC00542
Screw #4	2.5D		100	RC00545
Screw #4	2D		100	RC00544
Screw #4	3D		100	RC00546
Screw #6	1.5D		100	RC00563
Screw #6	1D		100	RC00562
Screw #6	2.5D		100	RC00565
Screw #6	2D		100	RC00564
Screw #6	3D		100	RC00566
BSC - Bulk				
BSC 5/16	1D	26	100	RC06502
BSC 5/16	1.5D	26	100	RC06503
BSC 5/16	2D	26	100	RC06504
BSC 3/8	1.5D	26	100	RC06603
BSC 3/8	2D	26	100	RC06604
BSC 7/16	1D	26	100	RC06702
BSC 7/16	1.5D	26	100	RC06703
BSC 7/16	2D	26	100	RC06704
BSC 1/2	1D	26	100	RC06802
BSC 1/2	1.5D	26	100	RC06803
BSC 1/2	2D	26	100	RC06804
BSF - Bulk				
BSF 3/16	1D	32	100	RC00032
BSF 3/16	1.5D	32	100	RC00033
BSF 3/16	2D	32	100	RC00034
BSF 3/16	2.5D	32	100	RC00035
BSF 3/16	3D	32	100	RC00036
BSF 1/4	1D	26	100	RC00042
BSF 1/4	1.5D	26	100	RC00043
BSF 1/4	2D	26	100	RC00044
BSF 1/4	2.5D	26	100	RC00045
BSF 1/4	3D	26	100	RC00046
BSF 5/16	1D	22	100	RC00052
BSF 5/16	1.5D	22	100	RC00053
BSF 5/16	2D	22	100	RC00054
BSF 5/16	2.5D	22	100	RC00055
BSF 5/16	3D	22	100	RC00056
BSF 3/8	1D	20	100	RC00062
BSF 3/8	1.5D	20	100	RC00063
BSF 3/8	2D	20	100	RC00064
BSF 3/8	2.5D	20	100	RC00065
BS F3/8	3D	20	100	RC00066

Size	Cut	Pitch	Qty	Item #
BSF 7/16	1D	18	100	RC00072
BSF 7/16	2D	18	100	RC00074
BSF 7/16	2.5D	20	100	RC00075
BSF 7/16	3D	18	100	RC00076
BSF 1/2	1D	16	100	RC00082
BSF 1/2	1.5D	16	100	RC00083
BSF 1/2	2D	16	100	RC00084
BSF 1/2	2.5D	16	100	RC00085
BSF 1/2	3D	16	100	RC00086
BSF 9/16	1D	16	50	RC00092
BSF 9/16	1.5D	16	50	RC00093
BSF 9/16	2D	16	50	RC00094
BSF 9/16	3D	16	50	RC00096
BSF 5/8	1D	14	50	RC00102
BSF 5/8	1.5D	14	50	RC00103
BSF 5/8	2D	14	50	RC00104
BSF 5/8	2.5D	14	50	RC00105
BSF 5/8	3D	14	50	RC00106
BSF 3/4	1D	12	50	RC00122
BSF 3/4	1.5D	12	50	RC00123
BSF 3/4	2D	12	50	RC00124
BSF 3/4	2.5D	12	50	RC00125
BSF 3/4	3D	12	50	RC00126
BSF 7/8	1D	11	25	RC00142
BSF 7/8	1.5D	11	25	RC00143
BSF 7/8	2D	11	25	RC00144
BSF 7/8	2.5D	11	25	RC00145
BSF 7/8	3D	11	10	RC00146
BSF 1	1D	10	25	RC00162
BSF 1	1.5D	10	25	RC00163
BSF 1	2D	10	25	RC00164
BSF 1	2.5D	10	25	RC00165
BSF 1	3D	10	10	RC00166
BSF 1 1/4	1D	9	10	RC00202
BSF 1 1/4	1.5D	9	10	RC00203
BSP - Bulk				
BSP 1/8	1D	28	100	RC01022
BSP 1/8	1.5D	28	100	RC01023
BSP 1/8	2D	28	100	RC01024
BSP 1/8	2.5D	28	100	RC01025
BSP 1/8	3D	28	100	RC01026
BSP 1/4	1D	19	100	RC01042
BSP 1/4	1.5D	19	100	RC01043
BSP 1/4	2D	19	100	RC01044
BSP 1/4	2.5D	19	100	RC01045
BSP 1/4	3D	19	100	RC01046
BSP 3/8	1D	19	100	RC01062
BSP 3/8	1.5D	19	100	RC01063
BSP 3/8	2D	19	100	RC01064
BSP 3/8	2.5D	19	100	RC01065
BSP 3/8	3D	19	100	RC01066

Size	Cut	Pitch	Qty	Item #
BSP 1/2	1D	14	50	RC01082
BSP 1/2	1.5D	14	50	RC01083
BSP 1/2	2D	14	50	RC01084
BSP 1/2	2.5D	14	50	RC01085
BSP 5/8	1D	14	50	RC01102
BSP 5/8	1.5D	14	50	RC01103
BSP 5/8	2D	14	50	RC01104
BSP 3/4	1D	14	50	RC01122
BSP 3/4	1.5D	14	50	RC01123
BSP 3/4	2D	14	50	RC01124
BSP 1	1D	11	25	RC01162
BSP 1	1.5D	11	25	RC01163
BSP 1	2D	11	25	RC01164
BSW - Bulk				
BSW 1/8	1D	40	100	RC02022
BSW 1/8	1.5D	40	100	RC02023
BSW 1/8	2D	40	100	RC02024
BSW 1/8	2.5D	40	100	RC02025
BSW 1/8	3D	40	100	RC02026
BSW 3/16	1D	24	100	RC02032
BSW 3/16	1.5D	24	100	RC02033
BSW 3/16	2D	24	100	RC02034
BSW 3/16	2.5D	24	100	RC02035
BSW 3/16	3D	24	100	RC02036
BSW 1/4	1D	20	100	RC02042
BSW 1/4	1.5D	20	100	RC02043
BSW 1/4	2D	20	100	RC02044
BSW 1/4	2.5D	20	100	RC02045
BSW 1/4	3D	20	100	RC02046
BSW 5/16	1D	18	100	RC02052
BSW 5/16	1.5D	18	100	RC02053
BSW 5/16	2D	18	100	RC02054
BSW 5/16	2.5D	18	100	RC02055
BSW 5/16	3D	18	100	RC02056
BSW 3/8	1D	16	100	RC02062
BSW 3/8	1.5D	16	100	RC02063
BSW 3/8	2D	16	100	RC02064
BSW 3/8	2.5D	16	100	RC02065
BSW 3/8	3D	16	100	RC02066
BSW 7/16	1D	14	100	RC02072
BSW 7/16	1.5D	14	100	RC02073
BSW 7/16	2D	14	100	RC02074
BSW 7/16	2.5D	14	100	RC02075
BSW 7/16	3D	14	100	RC02076
BSW 1/2	1D	12	100	RC02082
BSW 1/2	1.5D	12	100	RC02083
BSW 1/2	2D	12	100	RC02084
BSW 1/2	2.5D	12	100	RC02085
BSW 1/2	3D	12	100	RC02086
BSW 9/16	1D	12	50	RC02092
BSW 9/16	1.5D	12	50	RC02093

Inserts Free Running Tanged - Bulk



RECOIL™ helically wound wire thread inserts can be used to strengthen threads, giving applications a longer life. With a RECOIL™ insert installed, a more even distribution of load and stress can be achieved. Each insert sharing the load over the entire bolt and hole, improving holding or pull out resistance. RECOIL™ inserts are made of type 304 stainless steel wire rolled into a diamond shape cross-section.

Made from Stainless Steel.

Work-hardened to a tensile strength above 200,000 psi.

FOD-Free Design: No tangs to break off, retrieve or lose.



Size	Cut	Pitch	Qty	Item #	Size	Cut	Pitch	Qty	Item #	Size	Cut	Pitch	Qty	Item #
BSW 9/16	2D	12	50	RC02094	UNC 5/16	3D	18	100	RC03056	UNC 1 1/4	2D	7	10	RC03204
BSW 9/16	2.5D	12	50	RC02095	UNC 3/8	1D	16	100	RC03062	UNC 1 1/4	2.5D	7	10	RC03205
BSW 9/16	3D	12	50	RC02096	UNC 3/8	1.5D	16	100	RC03063	UNC 1 1/4	3D	7	10	RC03206
BSW 5/8	1D	11	50	RC02102	UNC 3/8	2D	16	100	RC03064	UNC 1 3/8	1D	6	10	RC03222
BSW 5/8	1.5D	11	50	RC02103	UNC 3/8	2.5D	16	100	RC03065	UNC 1 3/8	1.5D	6	10	RC03223
BSW 5/8	2D	11	50	RC02104	UNC 3/8	3D	16	100	RC03066	UNC 1 3/8	2D	6	10	RC03224
BSW 5/8	2.5D	11	50	RC02105	UNC 7/16	1D	14	100	RC03072	UNC 1 3/8	2.5D	6	10	RC03225
BSW 5/8	3D	11	50	RC02106	UNC 7/16	1.5D	14	100	RC03073	UNC 1 3/8	3D	6	10	RC03226
BSW 3/4	1D	10	50	RC02122	UNC 7/16	2D	14	100	RC03074	UNC 1 1/2	1D	6	10	RC03242
BSW 3/4	1.5D	10	50	RC02123	UNC 7/16	2.5D	14	100	RC03075	UNC 1 1/2	1.5D	6	10	RC03243
BSW 3/4	2D	10	50	RC02124	UNC 7/16	3D	14	100	RC03076	UNC 1 1/2	2D	6	10	RC03244
BSW 3/4	2.5D	10	50	RC02125	UNC 1/2	1D	13	100	RC03082	UNC 1 1/2	2.5D	6	10	RC03245
BSW 3/4	3D	10	50	RC02126	UNC 1/2	1.5D	13	100	RC03083	UNC 1 1/2	3D	6	10	RC03246
BSW 7/8	1D	9	25	RC02142	UNC 1/2	2D	13	100	RC03084	UNC 2	1.5D	4.5	10	RC03323
BSW 7/8	1.5D	9	25	RC02143	UNC 1/2	2.5D	13	100	RC03085	UNC 2	1D	56	100	RC03522
BSW 7/8	2D	9	25	RC02144	UNC 1/2	3D	13	100	RC03086	UNC 2	1.5D	56	100	RC03523
BSW 7/8	2.5D	9	25	RC02145	UNC 9/16	1D	12	50	RC03092	UNC 2	2D	56	100	RC03524
BSW 7/8	3D	9	25	RC02146	UNC 9/16	1.5D	12	50	RC03093	UNC 2	2.5D	56	100	RC03525
BSW 1	1D	8	25	RC02162	UNC 9/16	2D	12	50	RC03094	UNC 2	3D	56	100	RC03526
BSW 1	1.5D	8	25	RC02163	UNC 9/16	2.5D	12	50	RC03095	UNC 3	2.5D	48	100	RC03535
BSW 1	2D	8	25	RC02164	UNC 5/8	1D	11	50	RC03102	UNC 3	3D	48	100	RC03536
BSW 1	2.5D	8	25	RC02165	UNC 5/8	1.5D	11	50	RC03103	UNC 4	1D	40	100	RC03542
BSW 1	3D	8	25	RC02166	UNC 5/8	2D	11	50	RC03104	UNC 4	1.5D	40	100	RC03543
BSW 1.125	1D	7	10	RC02182	UNC 5/8	2.5D	11	50	RC03105	UNC 4	2D	40	100	RC03544
BSW 1.125	1.5D	7	10	RC02183	UNC 5/8	3D	11	50	RC03106	UNC 4	2.5D	40	100	RC03545
BSW 1.125	2D	7	10	RC02184	UNC 11/16	1D	11	50	RC03112 ▲	UNC 5	2.5D	40	100	RC03555
BSW 1.125	2.5D	7	10	RC02185	UNC 11/16	1.5D	11	50	RC03113	UNC 5	3D	40	100	RC03556
BSW 1.125	3D	7	10	RC02186	UNC 11/16	2D	11	50	RC03114	UNC 6	1D	32	100	RC03562
BSW 1.25	1D	7	10	RC02202	UNC 11/16	2.5D	11	50	RC03115 ▲	UNC 6	1.5D	32	100	RC03563
BSW 1.25	1.5D	7	10	RC02203	UNC 11/16	3D	11	50	RC03116 ▲	UNC 6	2D	32	100	RC03564
BSW 1.25	2D	7	10	RC02204	UNC 3/4	1D	10	50	RC03122	UNC 6	3D	32	100	RC03566
BSW 1.25	2.5D	7	10	RC02205	UNC 3/4	1.5D	10	50	RC03123	UNC 8	1D	32	100	RC03582
BSW 1.25	3D	7	10	RC02206	UNC 3/4	2D	10	50	RC03124	UNC 8	1.5D	32	100	RC03583
BSW 1.375	1D	6	10	RC02222	UNC 3/4	2.5D	10	50	RC03125	UNC 10	1D	24	100	RC03602
BSW 1.375	1.5D	6	10	RC02223	UNC 3/4	3D	10	50	RC03126					
BSW 1.375	2D	6	10	RC02224	UNC 7/8	1D	9	25	RC03142					
BSW 1.375	2.5D	6	10	RC02225	UNC 7/8	1.5D	9	25	RC03143	UNC (Left Handed) - Bulk				
BSW 1.375	3D	6	10	RC02226	UNC 7/8	2D	9	25	RC03144	UNC 1/4	1D	20	100	RC03042LH
BSW 1.5	1D	6	10	RC02242	UNC 7/8	2.5D	9	25	RC03145	UNC 1/4	2.5D	20	100	RC03045LH ▲
BSW 1.5	1.5D	6	10	RC02243	UNC 7/8	3D	9	25	RC03146	UNC 1/4	3D	20	100	RC03046LH ▲
BSW 1.5	2D	6	10	RC02244	UNC 1	1D	8	25	RC03162	UNC 1/2	1D	13	100	RC03082LH ▲
BSW 1.5	2.5D	6	10	RC02245	UNC 1	1.5D	8	25	RC03163					
BSW 1.5	3D	6	10	RC02246	UNC 1	2D	8	25	RC03164	UNF - Bulk				
					UNC 1	2.5D	8	25	RC03165	UNF 1/4	1D	28	100	RC04042
					UNC 1	3D	8	25	RC03166	UNF 1/4	1.5D	28	100	RC04043
UNC - Bulk					UNC 1 1/8	1D	7	10	RC03182	UNF 1/4	2D	28	100	RC04044
UNC 1/4	1D	20	100	RC03042	UNC 1 1/8	1.5D	7	10	RC03183	UNF 1/4	2.5D	28	100	RC04045
UNC 1/4	1.5D	20	100	RC03043	UNC 1 1/8	2D	7	10	RC03184	UNF 1/4	3D	28	100	RC04046
UNC 1/4	2D	20	100	RC03044	UNC 1 1/8	2.5D	7	10	RC03185	UNF 5/16	1D	24	100	RC04052
UNC 5/16	1D	18	100	RC03052	UNC 1 1/8	3D	7	10	RC03186	UNF 5/16	1.5D	24	100	RC04053
UNC 5/16	1.5D	18	100	RC03053	UNC 1 1/4	1D	7	10	RC03202	UNF 5/16	2D	24	100	RC04054
UNC 5/16	2D	18	100	RC03054	UNC 1 1/4	1.5D	7	10	RC03203	UNF 5/16	2.5D	24	100	RC04055
UNC 5/16	2.5D	18	100	RC03055						UNF 5/16	3D	24	100	RC04056

Inserts Free Running Tanged - Bulk



RECOIL™ helically wound wire thread inserts can be used to strengthen threads, giving applications a longer life. With a RECOIL™ insert installed, a more even distribution of load and stress can be achieved. Each insert sharing the load over the entire bolt and hole, improving holding or pull out resistance. RECOIL™ inserts are made of type 304 stainless steel wire rolled into a diamond shape cross-section.

Made from Stainless Steel.

Work-hardened to a tensile strength above 200,000 psi.

FOD-Free Design: No tangs to break off, retrieve or lose.



Size	Cut	Pitch	Qty	Item #
UNF 3/8	1D	24	100	RC04062
UNF 3/8	1.5D	24	100	RC04063
UNF 3/8	2D	24	100	RC04064
UNF 3/8	2.5D	24	100	RC04065
UNF 3/8	3D	24	100	RC04066
UNF 7/16	1D	20	100	RC04072
UNF 7/16	1.5D	20	100	RC04073
UNF 7/16	2D	20	100	RC04074
UNF 7/16	2.5D	20	100	RC04075
UNF 7/16	3D	20	100	RC04076
UNF 1/2	1D	20	100	RC04082
UNF 1/2	1.5D	20	100	RC04083
UNF 1/2	2D	20	100	RC04084
UNF 1/2	2.5D	20	100	RC04085
UNF 1/2	3D	20	100	RC04086
UNF 9/16	1D	18	50	RC04092
UNF 9/16	1.5D	18	50	RC04093
UNF 9/16	2.5D	18	50	RC04095
UNF 5/8	1D	18	50	RC04102
UNF 5/8	1.5D	18	50	RC04103
UNF 5/8	2D	18	50	RC04104
UNF 5/8	2.5D	18	50	RC04105
UNF 5/8	3D	18	50	RC04106
UNF 3/4	1D	16	50	RC04122
UNF 3/4	1.5D	16	50	RC04123
UNF 3/4	2D	16	50	RC04124
UNF 3/4	2.5D	16	50	RC04125
UNF 3/4	3D	16	50	RC04126
UNF 7/8	1D	14	25	RC04142
UNF 7/8	1.5D	14	25	RC04143
UNF 7/8	2D	14	25	RC04144
UNF 7/8	2.5D	14	25	RC04145
UNF 7/8	3D	14	25	RC04146
UNF 1	1D	12	25	RC04162
UNF 1	1.5D	12	25	RC04163
UNF 1	2D	12	25	RC04164
UNF 1	2.5D	12	25	RC04165
UNF 1	3D	12	25	RC04166
UNF 1 1/8	1D	12	10	RC04182
UNF 1 1/8	1.5D	12	10	RC04183
UNF 1 1/8	2D	12	10	RC04184
UNF 1 1/8	2.5D	12	10	RC04185
UNF 1 1/8	3D	12	10	RC04186
UNF 1 1/4	1D	12	10	RC04202
UNF 1 1/4	1.5D	12	10	RC04203
UNF 1 1/4	2D	12	10	RC04204
UNF 1 1/4	2.5D	12	10	RC04205
UNF 1 1/4	3D	12	10	RC04206
UNF 1 3/8	1D	12	10	RC04222
UNF 1 3/8	1.5D	12	10	RC04223
UNF 1 3/8	2D	12	10	RC04224
UNF 1 3/8	2.5D	12	10	RC04225

Size	Cut	Pitch	Qty	Item #
UNF 1 3/8	3D	12	10	RC04226
UNF 1 1/2	1D	12	10	RC04242
UNF 1 1/2	1.5D	12	10	RC04243
UNF 1 1/2	2D	12	10	RC04244
UNF 1 1/2	2.5D	12	10	RC04245
UNF 1 1/2	3D	12	10	RC04246
UNF 2	1.5D	12	10	RC04323
UNF 2	1.5D	12	10	RC04343
UNF 2	1.5D	12	10	RC04383
UNF 3	2.5D	56	100	RC04535
UNF 3	3D	56	100	RC04536
UNF 4	2.5D	48	100	RC04545
UNF 4	3D	48	100	RC04546
UNF 6	2.5D	40	100	RC04565
UNF 6	3D	40	100	RC04566
UNF 8	2.5D	36	100	RC04585
UNF 8	3D	36	100	RC04586
UNF 10	1D	32	100	RC04602
UNF 10	1.5D	32	100	RC04603
UNF 10	2D	32	100	RC04604
UNF 10	2.5D	32	100	RC04605
UNF 10	3D	32	100	RC04606
UNF 12	1.5D	28	100	RC04623
UNF 12	2D	28	100	RC04624
UNF 12	2.5D	28	100	RC04625
UNF 12	3D	28	100	RC04626
UNF (Left Handed) - Bulk				
UNF 3/8	1.5D	24	100	RC04063LH ▲
UNF 10	1.5D	32	100	RC04603LH ▲
UNS - Bulk				
UNS 1	1.5D	14	25	RC0416314
UNS 1	1D	14	25	RC0416214
UNS 1	2.5D	14	25	RC0416514
UNS 1	2D	14	25	RC0416414
UNS 1	3D	14	25	RC0416614
NC - Stripfeed				
NC 10	1.5D	24	500	RC03603SF
NC 12	1D	24	500	RC03622SF
NC 12	1.5D	24	500	RC03623SF
NC 1/4	1.5D	20	500	RC13043SF
NC 5/16	1D	18	250	RC13052SF
NC 5/16	1.5D	18	250	RC13053SF
NC 5/16	2D	18	250	RC13054SF
NC 3/8	1.5D	16	250	RC13063SF
NF - Stripfeed				
NF 1/4	1.5D	28	500	RC04043SF
NF 1/4	2.5D	28	250	RC04045SF
NF 5/16	1D	24	250	RC04052SF

Size	Cut	Pitch	Qty	Item #
NF 5/16	1.5D	24	250	RC04053SF
NF 5/16	2D	24	250	RC04054SF
NF 10	1.5D	32	500	RC04603SF
NF 10	2.5D	32	500	RC04605SF
UNC - Stripfeed				
UNC 1/4	1D	20	500	RC03042SF
UNC 1/4	1.5D	20	500	RC03043SF
UNC 1/4	2D	20	500	RC03044SF
UNC 5/16	1D	18	250	RC03052SF
UNC 5/16	1.5D	18	250	RC03053SF
UNC 5/16	2D	18	250	RC03054SF
UNC 3/8	1D	16	250	RC03062SF
UNC 3/8	1.5D	16	250	RC03063SF
UNC 3/8	1D	16	250	RC03064SF
UNC 2	1D	56	1000	RC03522SF
UNC 2	1.5D	56	1000	RC03523SF
UNC 2	2D	56	1000	RC03524SF
UNC 4	1D	40	1000	RC03542SF
UNC 4	1.5D	40	1000	RC03543SF
UNC 4	2D	40	1000	RC03544SF
UNC 6	1D	32	1000	RC03562SF
UNC 6	1.5D	32	1000	RC03563SF
UNC 6	2D	32	1000	RC03564SF
UNC 8	1D	32	1000	RC03582SF
UNC 8	1.5D	32	1000	RC03583SF
UNC 8	2D	32	1000	RC03584SF
UNC 10	1D	24	1000	RC03602SF
UNC 10	2D	24	500	RC03604SF
UNC 1/4	1D	20	500	RC13042SF
UNC 1/4	2D	20	250	RC13044SF
UNC 2	1D	56	1000	RC13522SF
UNC 2	1.5D	56	1000	RC13523SF
UNC 2	2D	56	1000	RC13524SF
UNC 4	1D	40	1000	RC13542SF
UNC 4	1.5D	40	1000	RC13543SF
UNC 4	2D	40	1000	RC13544SF
UNC 6	1D	32	1000	RC13562SF
UNC 6	1.5D	32	1000	RC13563SF
UNC 6	2D	32	1000	RC13564SF
UNC 6	2.5D	32	500	RC13565SF
UNC 8	1D	32	1000	RC13582SF
UNC 8	1.5D	32	1000	RC13583SF
UNC 8	2D	32	1000	RC13584SF
UNC 8	2.5D	32	500	RC13585SF
UNC 8	3D	32	500	RC13586SF
UNC 10	1D	24	1000	RC13602SF
UNC 10	1.5D	24	500	RC13603SF
UNC 10	2D	24	500	RC13604SF
UNC 12	1.5D	24	500	RC13623SF

Inserts Free Running Tangless - Bulk



RECOIL™ helically wound wire thread inserts can be used to strengthen threads, giving applications a longer life. With a RECOIL™ insert installed, a more even distribution of load and stress can be achieved. Each insert sharing the load over the entire bolt and hole, improving holding or pull out resistance. RECOIL™ inserts are made of type 304 stainless steel wire rolled into a diamond shape cross-section.

Made from Stainless Steel.

Work-hardened to a tensile strength above 200,000 psi.

FOD-Free Design: No tangs to break off, retrieve or lose.



Size	Cut	Pitch	Pack	Item #
Metric - Bulk				
M8	2.5D	1.25	500	RCTL05085
M10	2.5D	1.5	250	RCTL05105
M10	3D	1.5	100	RCTL05106
Metric Coarse - Bulk				
M10	1D	1.5	500	RCTL05102
M10	1.5D	1.5	500	RCTL05103
M10	2D	1.5	250	RCTL05104
M14	1D	2	50	RCTL05142
M14	1.5D	2	50	RCTL05143
M14	2D	2	50	RCTL05144
M16	1D	2	50	RCTL05162
M16	1.5D	2	50	RCTL05163
M16	2D	2	50	RCTL05164
Metric Fine - Bulk				
M2	1D	0.4	1000	RCTL05022
M2	1.5D	0.4	1000	RCTL05023
M2	2D	0.4	1000	RCTL05024
M2	2.5D	0.4	1000	RCTL05025
M2	3D	0.4	1000	RCTL05026
M3	1D	0.5	1000	RCTL05032
M3	1.5D	0.5	1000	RCTL05033
M3	2D	0.5	1000	RCTL05034
M3	2.5D	0.5	1000	RCTL05035
M3	3D	0.5	1000	RCTL05036
M4	1D	0.7	1000	RCTL05042
M4	1.5D	0.7	1000	RCTL05043
M4	2D	0.7	1000	RCTL05044
M4	2.5D	0.7	1000	RCTL05045
M4	3D	0.7	1000	RCTL05046
M5	1D	0.8	1000	RCTL05052
M5	1.5D	0.8	1000	RCTL05053
M5	2D	0.8	1000	RCTL05054
M5	2.5D	0.8	1000	RCTL05055
M5	3D	0.8	1000	RCTL05056
M6	1D	1	1000	RCTL05062
M6	1.5D	1	1000	RCTL05063
M6	2D	1	1000	RCTL05064
M6	2.5D	1	1000	RCTL05065
M6	3D	1	1000	RCTL05066

Size	Cut	Pitch	Pack	Item #
M8	1D	1.25	500	RCTL05082
M8	1.5D	1.25	500	RCTL05083
M8	2D	1.25	500	RCTL05084
M2.5	1D	0.45	1000	RCTL05252
M2.5	1.5D	0.45	1000	RCTL05253
M2.5	2D	0.45	1000	RCTL05254
M2.5	2.5D	0.45	1000	RCTL05255
M2.5	3D	0.45	1000	RCTL05256
UNC - Bulk				
UNC 1/4	1D	20	1000	RCTL03042
UNC 1/4	2D	20	1000	RCTL03044
UNC 1/4	2.5D	20	500	RCTL03045
UNC 1/4	3D	20	500	RCTL03046
UNC 5/16	1D	18	1000	RCTL03052
UNC 5/16	1.5D	18	500	RCTL03053
UNC 5/16	2D	18	500	RCTL03054
UNC 5/16	2.5D	18	500	RCTL03055
UNC 5/16	3D	18	500	RCTL03056
UNC 3/8	1D	16	1000	RCTL03062
UNC 3/8	1.5D	16	500	RCTL03063
UNC 3/8	2D	16	250	RCTL03064
UNC 3/8	2.5D	16	250	RCTL03065
UNC 3/8	3D	16	100	RCTL03066
UNC 1/2	1D	13	500	RCTL03082
UNC 1/2	1.5D	13	250	RCTL03083
UNC 1/2	2D	13	250	RCTL03084
UNC 1/2	2.5D	13	100	RCTL03085
UNC 1/2	3D	13	100	RCTL03086
UNC 2	1D	56	1000	RCTL03522
UNC 2	1.5D	56	1000	RCTL03523
UNC 2	2D	56	1000	RCTL03524
UNC 2	2.5D	56	1000	RCTL03525
UNC 2	3D	56	1000	RCTL03526
UNC 4	1D	40	1000	RCTL03542
UNC 4	1.5D	40	1000	RCTL03543
UNC 4	2D	40	1000	RCTL03544
UNC 4	2.5D	40	1000	RCTL03545
UNC 4	3D	40	1000	RCTL03546
UNC 6	1D	32	1000	RCTL03562
UNC 6	1.5D	32	1000	RCTL03563
UNC 6	2D	32	1000	RCTL03564

Size	Cut	Pitch	Pack	Item #
UNC 6	2.5D	32	1000	RCTL03565
UNC 6	3D	32	1000	RCTL03566
UNC 8	1D	32	1000	RCTL03582
UNC 8	1.5D	32	1000	RCTL03583
UNC 8	2D	32	1000	RCTL03584
UNC 8	2.5D	32	1000	RCTL03585
UNC 8	3D	32	1000	RCTL03586
UNC 10	1D	24	1000	RCTL03602
UNC 10	1.5D	24	1000	RCTL03603
UNC 10	2D	24	1000	RCTL03604
UNC 10	2.5D	24	1000	RCTL03605
UNC 10	3D	24	1000	RCTL03606
UNF - Bulk				
UNF 1/4	1D	28	1000	RCTL04042
UNF 1/4	2.5D	28	500	RCTL04045
UNF 1/4	3D	28	500	RCTL04046
UNF 5/16	2.5D	24	500	RCTL04055
UNF 5/16	3D	24	500	RCTL04056
UNF 3/8	2.5D	24	250	RCTL04065
UNF 3/8	3D	24	100	RCTL04066
UNF 1/2	1D	20	500	RCTL04082
UNF 1/2	1.5D	20	250	RCTL04083
UNF 1/2	2D	20	250	RCTL04084
UNF 1/2	2.5D	20	100	RCTL04085
UNF 1/2	3D	20	100	RCTL04086
UNF 10	2.5D	32	1000	RCTL04605
UNF 10	3D	32	1000	RCTL04606
UNC - Stripfeed				
UNC 1/4	1.5D	20	500	RCTL03043SF
UNF - Stripfeed				
UNF 5/16	1D	18	250	RCTL03052SF
UNF 5/16	1.5D	18	250	RCTL03053SF
UNF 5/16	2D	18	250	RCTL03054SF
UNF 3/8	1D	16	250	RCTL03062SF
UNF 3/8	1.5D	16	250	RCTL03063SF
UNF 3/8	2D	16	250	RCTL03064SF
UNF 1/4	1.5D	28	500	RCTL04043SF

Inserts Scew Locking Tanged - Bulk



RECOIL™ helically wound wire thread inserts can be used to strengthen threads, giving applications a longer life. With a RECOIL™ insert installed, a more even distribution of load and stress can be achieved. Each insert sharing the load over the entire bolt and hole, improving holding or pull out resistance. RECOIL™ inserts are made of type 304 stainless steel wire rolled into a diamond shape cross-section.

Made from Stainless Steel.

Work-hardened to a tensile strength above 200,000 psi.

FOD-Free Design: No tangs to break off, retrieve or lose.



Size	Cut	Pitch	Pack	Item #
Metric Coarse - Bulk				
M3	1D	0.5	100	RC15032
M3	1.5D	0.5	100	RC15033
M3	2D	0.5	100	RC15034
M3	2.5D	0.5	100	RC15035
M3	3D	0.5	100	RC15036
M4	1D	0.7	100	RC15042
M4	1.5D	0.7	100	RC15043
M4	2D	0.7	100	RC15044
M4	2.5D	0.7	100	RC15045
M4	3D	0.7	100	RC15046
M5	1D	0.8	100	RC15052
M5	1.5D	0.8	100	RC15053
M5	2D	0.8	100	RC15054
M5	2.5D	0.8	100	RC15055
M5	3D	0.8	100	RC15056
M6	1D	1	100	RC15062
M6	1.5D	1	100	RC15063
M6	2D	1	100	RC15064
M6	2.5D	1	100	RC15065
M6	3D	1	100	RC15066
M7	1D	1	100	RC15072
M7	1.5D	1	100	RC15073
M7	2D	1	100	RC15074
M7	2.5D	1	100	RC15075
M7	3D	1	100	RC15076
M8	1D	1.25	100	RC15082
M8	1.5D	1.25	100	RC15083
M8	2D	1.25	100	RC15084
M8	2.5D	1.25	100	RC15085
M8	3D	1.25	100	RC15086
M10	1D	1.5	100	RC15102
M10	1.5D	1.5	100	RC15103
M10	2D	1.5	100	RC15104
M10	2.5D	1.5	100	RC15105
M10	3D	1.5	100	RC15106
M12	1D	1.75	100	RC15122
M12	1.5D	1.75	100	RC15123
M12	2D	1.75	100	RC15124
M12	2.5D	1.75	100	RC15125
M12	3D	1.75	100	RC15126
M14	1D	2	50	RC15142
M14	1.5D	2	50	RC15143
M14	2D	2	50	RC15144
M14	2.5D	2	50	RC15145
M14	3D	2	50	RC15146
M16	1D	2	50	RC15162
M16	1.5D	2	50	RC15163
M16	2D	2	50	RC15164
M16	2.5D	2	50	RC15165
M16	3D	2	50	RC15166
M18	1D	2.5	50	RC15182

Size	Cut	Pitch	Pack	Item #
M18	1.5D	2.5	50	RC15183
M18	2D	2.5	50	RC15184
M18	2.5D	2.5	50	RC15185
M18	3D	2.5	50	RC15186
M20	1D	2.5	25	RC15202
M20	1.5D	2.5	25	RC15203
M20	2D	2.5	25	RC15204
M20	2.5D	2.5	25	RC15205
M20	3D	2.5	25	RC15206
M22	1D	2.5	25	RC15222
M22	1.5D	2.5	25	RC15223
M22	2D	2.5	25	RC15224
M22	2.5D	2.5	25	RC15225
M22	3D	2.5	25	RC15226
M24	1D	3	25	RC15242
M24	1.5D	3	25	RC15243
M24	2D	3	25	RC15244
M24	2.5D	3	25	RC15245
M24	3D	3	25	RC15246
M2.5	1D	0.45	100	RC15252
M2.5	1.5D	0.45	100	RC15253
M2.5	2D	0.45	100	RC15254
M2.5	2.5D	0.45	100	RC15255
M2.5	3D	0.45	100	RC15256
M27	1D	3	10	RC15272
M27	1.5D	3	10	RC15273
M30	1D	3.5	10	RC15302
M30	1.5D	3.5	10	RC15303
M30	2.5D	3.5	10	RC15305
M3.5	1D	0.6	100	RC15352 ▲
M3.5	1.5D	0.6	100	RC15353
M36	1D	1	10	RC15362
M36	1.5D	1	10	RC15363
M36	3D	1	10	RC15366
M14	2.5D	1.5	50	RC17145
M14	3D	1.5	50	RC17146
M16	2.5D	1.5	50	RC17165
M16	3D	1.5	50	RC17166
M18	1D	2	50	RC17182
M18	1.5D	2	50	RC17183
M18	2D	2	50	RC17184
M18	2.5D	2	50	RC17185
M18	3D	2	50	RC17186
M20	2.5D	2	25	RC17205
M20	3D	2	25	RC17206
M22	1D	2	25	RC17222
M22	1.5D	2	25	RC17223
M22	2D	2	25	RC17224
M22	2.5D	2	25	RC17225
M22	3D	2	25	RC17226
M24	2D	2	25	RC17244
M24	2.5D	2	25	RC17245

Size	Cut	Pitch	Pack	Item #
M24	3D	2	25	RC17246
M18	1.5D	1.5	50	RC18183
Metric Fine - Bulk				
M2.2	1D	0.45	100	RC15012
M2.2	1.5D	0.45	100	RC15013
M8	1D	1	100	RC17082
M8	1.5D	1	100	RC17083
M8	2D	1	100	RC17084
M8	2.5D	1	100	RC17085
M8	3D	1	100	RC17086
M10	1D	1.25	100	RC17102
M10	1.5D	1.25	100	RC17103
M10	2D	1.25	100	RC17104
M12	1D	1.5	100	RC17122
M12	1.5D	1.5	100	RC17123
M12	2D	1.5	100	RC17124
M12	3D	1.5	100	RC17126
M14	1D	1.5	50	RC17142
M14	1.5D	1.5	50	RC17143
M14	2D	1.5	50	RC17144
M16	1D	1.5	50	RC17162
M16	1.5D	1.5	50	RC17163
M16	2D	1.5	50	RC17164
M20	1D	2	25	RC17202
M20	1.5D	2	25	RC17203
M20	2D	2	25	RC17204
M24	1D	2	25	RC17242
M24	1.5D	2	25	RC17243
M30	1.5D	2	10	RC17303
M39	1.5D	3	10	RC17393
M8	1D	0.75	100	RC18082
M8	1.5D	0.75	100	RC18083
M8	2.5D	0.75	100	RC18085
M8	3D	0.75	100	RC18086
M10	1D	1	100	RC18102
M10	1.5D	1	100	RC18103
M10	2D	1	100	RC18104
M12	1D	1.25	100	RC18122
M12	1.5D	1.25	100	RC18123
M12	2D	1.25	100	RC18124
M20	1D	1.5	25	RC18202
M20	1.5D	1.5	25	RC18203
M20	2D	1.5	25	RC18204
M20	2.5D	1.5	25	RC18205
UNC - Bulk				
UNC 1/4	1D	20	100	RC13042
UNC 1/4	1.5D	20	100	RC13043
UNC 1/4	2D	20	100	RC13044
UNC 1/4	2.5D	20	100	RC13045
UNC 1/4	3D	20	100	RC13046

Inserts Scw Locking Tanged - Bulk



RECOIL™ helically wound wire thread inserts can be used to strengthen threads, giving applications a longer life. With a RECOIL™ insert installed, a more even distribution of load and stress can be achieved. Each insert sharing the load over the entire bolt and hole, improving holding or pull out resistance. RECOIL™ inserts are made of type 304 stainless steel wire rolled into a diamond shape cross-section.

Made from Stainless Steel.

Work-hardened to a tensile strength above 200,000 psi.

FOD-Free Design: No tangs to break off, retrieve or lose.



Size	Cut	Pitch	Pack	Item #
UNC 5/16	1D	18	100	RC13052
UNC 5/16	1.5D	18	100	RC13053
UNC 5/16	2D	18	100	RC13054
UNC 5/16	2.5D	18	100	RC13055
UNC 5/16	3D	18	100	RC13056
UNC 3/8	1D	16	100	RC13062
UNC 3/8	1.5D	16	100	RC13063
UNC 3/8	1D	16	100	RC13064
UNC 3/8	2.5D	16	100	RC13065
UNC 3/8	3D	16	100	RC13066
UNC 7/16	1D	14	100	RC13072
UNC 7/16	1.5D	14	100	RC13073
UNC 7/16	2D	14	100	RC13074
UNC 7/16	2.5D	14	100	RC13075
UNC 7/16	3D	14	100	RC13076
UNC 1/2	1D	13	100	RC13082
UNC 1/2	1.5D	13	100	RC13083
UNC 1/2	2D	13	100	RC13084
UNC 1/2	2.5D	13	100	RC13085
UNC 1/2	3D	13	100	RC13086
UNC 9/16	1D	12	50	RC13092
UNC 9/16	1.5D	12	50	RC13093
UNC 9/16	2D	12	50	RC13094
UNC 9/16	2.5D	12	50	RC13095
UNC 9/16	3D	12	50	RC13096
UNC 5/8	1D	11	50	RC13102
UNC 5/8	1.5D	11	50	RC13103
UNC 5/8	2D	11	50	RC13104
UNC 5/8	2.5D	11	50	RC13105
UNC 5/8	3D	11	50	RC13106
UNC 3/4	1D	10	50	RC13122
UNC 3/4	2.5D	10	50	RC13123
UNC 3/4	2D	10	50	RC13124
UNC 3/4	2.5D	10	50	RC13125
UNC 3/4	3D	10	50	RC13126
UNC 7/8	1D	9	25	RC13142
UNC 7/8	1.5D	9	25	RC13143
UNC 7/8	2D	9	25	RC13144
UNC 7/8	2.5D	9	25	RC13145
UNC 1	1D	8	25	RC13162
UNC 1	1.5D	8	25	RC13163
UNC 1	2D	8	25	RC13164
UNC 1	2.5D	8	25	RC13165
UNC 1	3D	8	25	RC13166
UNC 1 1/8	1D	7	10	RC13182
UNC 1 1/8	1.5D	7	10	RC13183
UNC 1 1/8	2D	7	10	RC13184
UNC 1 1/4	1D	7	10	RC13202
UNC 1 1/4	1.5D	7	10	RC13203
UNC 1 1/4	2D	7	10	RC13204
UNC 1 1/4	2.5D	7	10	RC13205
UNC 1 3/8	1D	6	10	RC13222 ▲

Size	Cut	Pitch	Pack	Item #
UNC 1 3/8	1.5D	6	10	RC13223 ▲
UNC 1 1/2	1D	6	10	RC13242 ▲
UNC 1 1/2	1.5D	6	10	RC13243 ▲
UNC 1 1/2	2D	6	10	RC13244 ▲
UNC 1 1/2	3D	6	10	RC13246 ▲
UNC 2	1D	56	100	RC13522
UNC 2	1.5D	56	100	RC13523
UNC 2	2D	56	100	RC13524
UNC 2	2.5D	56	100	RC13525
UNC 2	3D	56	100	RC13526
UNC 3	1D	48	100	RC13532
UNC 3	1.5D	48	100	RC13533
UNC 3	2D	48	100	RC13534
UNC 3	2.5D	48	100	RC13535 ▲
UNC 4	1D	40	100	RC13542
UNC 4	1.5D	40	100	RC13543
UNC 4	2D	40	100	RC13544
UNC 4	2.5D	40	100	RC13545
UNC 4	3D	40	100	RC13546
UNC 5	1D	40	100	RC13552
UNC 5	1.5D	40	100	RC13553
UNC 5	2D	40	100	RC13554
UNC 5	2.5D	40	100	RC13555
UNC 5	3D	40	100	RC13556
UNC 6	1D	32	100	RC13562
UNC 6	1.5D	32	100	RC13563
UNC 6	2D	32	100	RC13564
UNC 6	2.5D	32	100	RC13565
UNC 6	3D	32	100	RC13566
UNC 8	1D	32	100	RC13582
UNC 8	2D	32	100	RC13584
UNC 8	2.5D	32	100	RC13585
UNC 8	3D	32	100	RC13586
UNC 10	1D	24	100	RC13602
UNC 10	1.5D	24	100	RC13603
UNC 10	2D	24	100	RC13604
UNC 10	2.5D	24	100	RC13605
UNC 10	3D	24	100	RC13606
UNC 12	1D	24	100	RC13622
UNC 12	1.5D	24	100	RC13623
UNC 12	2D	24	100	RC13624
UNC 12	2.5D	24	100	RC13625
UNC 12	3D	24	100	RC13626
UNF - Bulk				
UNF 1/4	1D	28	100	RC14042
UNF 1/4	1.5D	28	100	RC14043
UNF 1/4	2D	28	100	RC14044
UNF 1/4	2.5D	28	100	RC14045
UNF 1/4	3D	28	100	RC14046
UNF 5/16	1D	24	100	RC14052
UNF 5/16	1.5D	24	100	RC14053

Size	Cut	Pitch	Pack	Item #
UNF 5/16	2D	24	100	RC14054
UNF 5/16	2.5D	24	100	RC14055
UNF 5/16	3D	24	100	RC14056
UNF 3/8	1D	24	100	RC14062
UNF 3/8	1.5D	24	100	RC14063
UNF 3/8	2D	24	100	RC14064
UNF 3/8	2.5D	24	100	RC14065
UNF 3/8	3D	24	100	RC14066
UNF 7/16	1D	20	100	RC14072
UNF 7/16	1.5D	20	100	RC14073
UNF 7/16	2D	20	100	RC14074
UNF 1/2	1D	20	100	RC14082
UNF 1/2	1.5D	20	100	RC14083
UNF 1/2	2D	20	100	RC14084
UNF 1/2	2.5D	20	100	RC14085
UNF 1/2	3D	20	100	RC14086
UNF 9/16	1D	18	50	RC14092
UNF 9/16	1.5D	18	50	RC14093
UNF 9/16	2D	18	50	RC14094
UNF 9/16	2.5D	18	50	RC14095
UNF 9/16	3D	18	50	RC14096
UNF 5/8	1D	18	50	RC14102
UNF 5/8	1.5D	18	50	RC14103
UNF 5/8	2D	18	50	RC14104
UNF 5/8	2.5D	18	50	RC14105
UNF 5/8	3D	18	50	RC14106
UNF 3/4	1D	16	50	RC14122
UNF 3/4	1.5D	16	50	RC14123
UNF 3/4	2D	16	50	RC14124
UNF 3/4	2.5D	16	50	RC14125
UNF 3/4	3D	16	50	RC14126
UNF 7/8	1D	14	25	RC14142
UNF 7/8	1.5D	14	25	RC14143
UNF 7/8	2D	14	25	RC14144
UNF 7/8	2.5D	14	25	RC14145
UNF 1	1D	12	25	RC14162
UNF 1	1.5D	12	25	RC14163
UNF 1	1.5D	14	25	RC1416314 ▲
UNF 1	2D	12	25	RC14164
UNF 1	2D	14	25	RC1416414 ▲
UNF 1	2.5D	12	25	RC14165
UNF 1	2.5D	14	25	RC1416514 ▲
UNF 1	3D	12	25	RC14166
UNF 1	3D	14	25	RC1416614 ▲
UNF 1 1/8	1D	12	10	RC14182
UNF 1 1/8	1.5D	12	10	RC14183
UNF 1 1/8	2D	12	10	RC14184
UNF 1 1/4	1D	12	10	RC14202
UNF 1 1/4	1.5D	12	10	RC14203
UNF 1 3/8	1D	12	10	RC14222 ▲
UNF 1 3/8	1.5D	12	10	RC14223 ▲
UNF 1 1/2	1D	12	10	RC14242 ▲

Inserts ScREW Locking Tanged - Bulk



RECOIL™ helically wound wire thread inserts can be used to strengthen threads, giving applications a longer life. With a RECOIL™ insert installed, a more even distribution of load and stress can be achieved. Each insert sharing the load over the entire bolt and hole, improving holding or pull out resistance. RECOIL™ inserts are made of type 304 stainless steel wire rolled into a diamond shape cross-section.

Made from Stainless Steel.

Work-hardened to a tensile strength above 200,000 psi.

FOD-Free Design: No tangs to break off, retrieve or lose.



Size	Cut	Pitch	Pack	Item #
UNF 1 1/2	1.5D	12	10	RC14243 ▲
UNF 1 1/2	2D	12	10	RC14244 ▲
UNF 3	1D	56	100	RC14532
UNF 3	1.5D	56	100	RC14533
UNF 3	2D	56	100	RC14534
UNF 4	1D	48	100	RC14542
UNF 4	1.5D	48	100	RC14543
UNF 4	2D	48	100	RC14544
UNF 6	1D	40	100	RC14562
UNF 6	1.5D	40	100	RC14563
UNF 6	2D	40	100	RC14564
UNF 8	1D	36	100	RC14582
UNF 8	1.5D	36	100	RC14583
UNF 8	2D	36	100	RC14584
UNF 8	3D	36	100	RC14586
UNF 10	1D	32	100	RC14602
UNF 10	1.5D	32	100	RC14603
UNF 10	2D	32	100	RC14604
UNF 10	2.5D	32	100	RC14605
UNF 10	3D	32	100	RC14606
UN - Bulk				
UN 1 1/2	3D	8	10	RC16246

Size	Cut	Pitch	Pack	Item #
UNS - Bulk				
UNS 1	1D	14	25	RC1416214 ▲
Metric Fine - Stripfeed				
M3	1.5D	0.5	1000	RC15033SF
Metric Coarse - Stripfeed				
M3	1D	0.5	1000	RC15032SF
M3	2D	0.5	1000	RC15034SF
M3	2.5D	0.5	500	RC15035SF
M4	1D	0.7	1000	RC15042SF
M4	1.5D	0.7	1000	RC15043SF
M4	2D	0.7	1000	RC15044SF
M5	1D	0.8	1000	RC15052SF
M5	1.5D	0.8	500	RC15053SF
M5	2D	0.8	500	RC15054SF
M6	1D	1	500	RC15062SF
M6	1.5D	1	500	RC15063SF
M6	2D	1	500	RC15064SF
M6	2.5D	1	500	RC15065SF
M8	1D	1.25	500	RC15082SF
M8	1.5D	1.25	500	RC15083SF
M8	2D	1.25	500	RC15084SF
M10	1D	1.5	250	RC15102SF

Size	Cut	Pitch	Pack	Item #
M10	1.5D	1.5	250	RC15103SF
M10	2D	1.5	250	RC15104SF
M12	1D	1.75	125	RC15122SF
M12	1.5D	1.75	125	RC15123SF
M2.5	1D	0.45	1000	RC15252SF
M2.5	1.5D	0.45	1000	RC15253SF
M2.5	2D	0.45	1000	RC15254SF
UN - Stripfeed				
UN 1/4	1D	28	500	RC14042SF
UN 1/4	1.5D	28	500	RC14043SF
UN 1/4	2D	28	500	RC14044SF
UN 5/16	1D	24	250	RC14052SF
UN 5/16	1.5D	24	250	RC14053SF
UN 5/16	2D	24	250	RC14054SF
UN 7/16	1D	20	250	RC14072SF
UN 4	1D	48	1000	RC14542SF
UN 6	1D	40	1000	RC14562SF
UN 10	1D	32	1000	RC14602SF
UN 10	1.5D	32	500	RC14603SF
UN 10	2D	32	500	RC14604SF

Inserts Scw Locking Tangless - Bulk



RECOIL™ Locking Inserts or RECOIL™ Locking Wire Thread Inserts are helically wound screw thread inserts generally manufactured from Type 304 (18-8) stainless steel wire cold rolled into diamond shaped cross section having a series of uniquely designed LOCKING CHORDS which upon the engagement of a screw or bolt deflects radially to permit the installation of the bolt.

These Locking Inserts are used under the most severe vibration or varying temperature conditions.



Size	Cut	Pitch	Pack	Item #
Metric Coarse - Bulk				
M10	1D	1.5	1000	RCTL15102
M10	1.5D	1.5	1000	RCTL15103
M10	2D	1.5	1000	RCTL15104
M10	2.5D	1.5	250	RCTL15105
M10	3D	1.5	250	RCTL15106
M12	1D	1.75	500	RCTL15122
M12	1.5D	1.75	250	RCTL15123
M12	2D	1.75	200	RCTL15124
Metric Fine - Bulk				
M3	1D	0.5	1000	RCTL15032
M3	2.5D	0.5	1000	RCTL15035
M3	3D	0.5	1000	RCTL15036
M4	1D	0.7	1000	RCTL15042
M4	2.5D	0.7	1000	RCTL15045
M4	3D	0.7	1000	RCTL15046
M5	1D	0.8	1000	RCTL15052
M5	1.5D	0.8	1000	RCTL15053
M5	2D	0.8	1000	RCTL15054

Size	Cut	Pitch	Pack	Item #
M5	2.5D	0.8	1000	RCTL15055
M5	3D	0.8	1000	RCTL15056
M6	1D	1	1000	RCTL15062
M6	1.5D	1	1000	RCTL15063
M6	2D	1	1000	RCTL15064
M6	2.5D	1	1000	RCTL15065
M6	3D	1	1000	RCTL15066
M8	1D	1.25	1000	RCTL15082
M8	1.5D	1.25	1000	RCTL15083
M8	2D	1.25	1000	RCTL15084
M8	2.5D	1.25	500	RCTL15085
M8	3D	1.25	500	RCTL15086
M2.5	1D	0.45	1000	RCTL15252
M2.5	1.5D	0.45	1000	RCTL15253
M2.5	2D	0.45	1000	RCTL15254
M2.5	2.5D	0.45	1000	RCTL15255
M2.5	3D	0.45	1000	RCTL15256
UNC - Bulk				
UNC 1/4	3D	20	500	RCTL13046

Size	Cut	Pitch	Pack	Item #
UNC 5/16	1D	18	500	RCTL13052
UNC 5/16	1.5D	18	500	RCTL13053
UNC 5/16	2D	18	500	RCTL13054
UNC 3/8	1D	16	1000	RCTL13062
UNC 3/8	1.5D	16	1000	RCTL13063
UNC 3/8	2D	16	1000	RCTL13064
UNC 4	3D	40	1000	RCTL13546
UNF - Bulk				
UNF 1/4	1.5D	28	1000	RCTL14043
UNF 5/16	1D	24	500	RCTL14052
UNF 5/16	1.5D	24	500	RCTL14053
UNF 5/16	2D	24	500	RCTL14054
UNF 3/8	1D	24	500	RCTL14062
UNF 3/8	1.5D	24	500	RCTL14063
UNF 3/8	2D	24	250	RCTL14064
UNF - Stripfeed				
UNF 1/4	1.5D	28	500	RCTL14043SF

Ensats® Inserts Self Tapping



Ensats® is a self-tapping threaded insert with external and internal thread, cutting slots or cutting bores.

A continuous process of further development has brought about a number of major improvements to product characteristics.

The Ensats® is used throughout the whole of the metal and plastics processing industry.

Ensats® is ideally suited for the fast repair of torn and damaged threads. The same screw size can be used again.



Size	Pitch	Length mm	Item #
Steel - Metric			
M3	0.5	6	RC302003016
M4	0.7	8	RC302004016
M5	0.8	10	RC302005016
M6	1	14	RC302006016
M6 x M9	1	12	RC302006116
M8	1.25	15	RC302008016
M8	1.25	15	RC302008050 ▲
M10	1.5	18	RC302010016
M10	1.25		RC302010616
M12	1.75	22	RC302012016
M12	1.25	22	RC302012616 ▲
M12	1.5	22	RC302012716
M14	2	24	RC302014016
M16	2	22	RC302016016
M16	2	22	RC302016040 ▲
M16	1.5	22	RC302016716
M18	2.5	22	RC302018016 ▲
M20	2.5	27	RC302020016
M14	1.25	9	RC304014016 ▲
M14	1.25	15	RC304014116 ▲
M3	0.5		RC305003080 ▲
M4	0.7		RC305004080 ▲
M5	0.8	10	RC305005080
M3	0.5	4	RC307003016
M4	0.7	6	RC307004016 ▲
M5	0.8	7	RC307005016 ▲
M6	1	8	RC307006016
M8	1.25	9	RC307008016 ▲
M10	1.5	10	RC307010016 ▲
M3	0.5	6	RC308003016 ▲
M4	0.7	8	RC308004016
M5	0.8	10	RC308005016 ▲
M6	1	12	RC308006016 ▲
M8	1.25	14	RC308008016 ▲
M10	1.5	18	RC308010016 ▲
M3	0.5	6	RC309003080
M4	0.7	10	RC309004080
M5	0.8	12	RC309005080
M6	1	14	RC309006080
M8	1.25	20	RC309008080
M10	1.5	23	RC309010080
M12	1.75	26	RC309012080 ▲
Steel - BSW			
BSW 1/2	12		RC302055016 ▲
Steel - UNC			
UNC 8	32		RC302060816 ▲
UNC 10	24		RC302061016
UNC 1/4	20		RC302062516
UNC 5/16	18		RC302063116

Size	Pitch	Length mm	Item #
UNC 3/8	16		RC302063716
UNC 7/16	14		RC302064416
UNC 1/2	13		RC302065016
UNC 5/8	11		RC302066216
UNC 3/4	10		RC302067516 ▲
Steel - UNF			
UNF 10	32		RC302071016 ▲
UNF 1/4	28		RC302072516
UNF 5/16	24		RC302073116
UNF 3/8	24		RC302073716
UNF 7/16	20		RC302074416
UNF 1/2	20		RC302075016
UNF 5/8	18		RC302076216 ▲
Zinc Plated - Metric (Short)			
M3.5	0.6	6	RC307003516 ▲
M12	1.5	12	RC307012016 ▲
M14	1.5	14	RC307014016 ▲
M16	2	14	RC307016016 ▲
Zinc Plated - Metric (Long)			
M3.5	0.6	8	RC308003516 ▲
M12	1.5	22	RC308012016 ▲
M14	1.5	24	RC308014016 ▲
M16	2	24	RC308016016 ▲
Zinc Plated - UNC (Short)			
UNC #4	40	6	RC302060416 ▲
UNC #6	32	8	RC302060616 ▲
Zinc Plated - UNF (Short)			
UNF #4	48	6	RC302070416 ▲
UNF #6	40	8	RC302070616 ▲
UNF #8	36	8	RC302070816 ▲
Stainless Steel - Metric			
M3	0.5	6	RC302003040 ▲
M3	0.5	6	RC302003050 ▲
M3.5	0.6	6	RC302003540 ▲
M4	0.7	8	RC302004040
M4	0.7	8	RC302004050 ▲
M5	0.8	10	RC302005040
M6	1	14	RC302006040
M6	1	14	RC302006050 ▲
M6 x M9	1	12	RC302006140 ▲
M8	1.25	15	RC302008040
M10	1.5	18	RC302010040
M12	1.75	22	RC302012040
M14	2	24	RC302014040 ▲
M18	2.5	24	RC302018040 ▲
M20	2.5	27	RC302020040 ▲

Size	Pitch	Length mm	Item #
Brass - Metric			
M5	0.8		RC302005080 ▲
M6	1		RC302006080
M8	1.25		RC302008080
M10	1.5	18	RC302010080
M12	1.75	22	RC302012080
M3			RC303003080 ▲
M3.5	0.6	8	RC305003580 ▲
M6	1		RC305006080
M2.5	0.45	6	RC309002580 ▲
M3.5	0.6	8	RC309003580 ▲
Metric - Mandrel			
M3	0.5		RC620003070 ▲
M5	0.8		RC620005070 ▲
M8	1.25		RC620008070 ▲
M10	1.5		RC620010070 ▲
M12	1.5		RC620012070 ▲
M14	1.5		RC620014070 ▲
M16	2		RC620016070 ▲
M3	0.5		RC621003070 ▲
M4	0.7		RC621004070 ▲
M5	0.8		RC621005070 ▲
M6	1		RC621006070 ▲
M8	1.25		RC621008070 ▲
M10	1.5		RC621010070 ▲
M12	1.5		RC621012070 ▲
M14	1.5		RC621014070 ▲
M16	2		RC621016070 ▲
Metric Coarse - Mandrel			
M3.5 x 8	0.6		RC302003516 ▲
Tool - Prod			
M3	0.5		RC620003000 ▲
M5	0.8		RC620005000 ▲
M10			RC620010000 ▲
M12			RC620012000 ▲
M14			RC620014000 ▲
M16			RC620016000 ▲
Tool - Deep			
M3	0.5		RC621003000 ▲
M4	0.7		RC621004000 ▲
M5	0.8		RC621005000 ▲
M6	1		RC621006000 ▲
M10			RC621010000 ▲
M12			RC621012000 ▲
M14			RC621014000 ▲
M16			RC621016000 ▲

Keyserts



Application

Trucks, Rv's
Machinery
Small Engines
Moulds
Tool & Die
Mro Tasks

Keyserts are designed to repair damaged threads or for use in original equipment, and provide easy installation and versatility. Featuring a key-locking action that prevents rotation due to vibration or torsion, commercial grade Keyserts can be used in a wide range of materials and applications. Keyserts are available in carbon and stainless steel, and are supplied in thin wall and heavy duty styles.

Note: Keyserts are not recommended for use in brittle materials, such as cast iron or plastic.



Size	Pitch	Item #
Carbon - Metric		
M5	0.8	RC75051
M6	1	RC75061
M8	1.25	RC75081
M10	1.5	RC75101
M12	1.75	RC75121
Heavy Duty Carbon - Metric		
M4	0.7	RC75042
M5	0.8	RC75052
M6	1	RC75062
M8	1.25	RC75082
M10	1.5	RC75102
M12	1.75	RC75122
M14	2	RC75142
M16	2	RC75162
M20	2.5	RC75202
M20	2.5	RC75207
M24	3	RC75242
M8	1	RC77082
M10	1.25	RC77102
M14	1.5	RC77142
M16	1.5	RC77162
M24	2	RC77242
M30	2	RC77304
M12	1.25	RC78122
M18	1.5	RC78182
M20	1.5	RC78202
M20	1.5	RC78207
M22	1.5	RC78222
Heavy Duty Carbon - NC		
NC 1/4	20	RC73042
NC 5/16	18	RC73052
NC 3/8	16	RC73062
NC 7/16	14	RC73072
NC 1/2	13	RC73082
NC 9/16	12	RC73092
NC 5/8	11	RC73102
NC 3/4	10	RC73122
NC 1 1/2	6	RC73242
Heavy Duty Carbon - NF		
NF 1/4	28	RC74042
NF 3/8	24	RC74062
NF 1	14	RC7416214
NF 1 1/2	12	RC74242
Heavy Duty Carbon - UNC		
UNC 7/8	9	RC73142

Size	Pitch	Item #
UNC 1	8	RC73162
UNC 1 1/8	7	RC73182
UNC 1 1/4	7	RC73202
UNC 8	32	RC73582
UNC 10	24	RC73602
UNC 7/16	20	RC74072
UNC 1/2	20	RC74082
UNC 9/16	18	RC74092
UNC 5/8	18	RC74102
UNC 3/4	16	RC74122
UNC 7/8	14	RC74142
UNC 1	12	RC74162
UNC 1 1/8	12	RC74182
UNC 1 1/4	12	RC74202
UNC 10	32	RC74602
UNC 10		RC74607
Lightweight Carbon - UNC		
UNC 1/4	20	RC73041
Lightweight Carbon - NC		
NC 1/4	20	RC73046
Solid Carbon Steel - Metric		
M8	1.25	RC75084
M32	2	RC77322
M33	2	RC77332
Solid Carbon Steel - UNC		
7/16	14	RC73074
Solid Steel - Metric		
M10	1.25	RC77104
M14	1.5	RC77144
M16	1.5	RC77164
M12	1.25	RC78124
M18	1.5	RC78184
M20	1.5	RC78204
M22	1.5	RC78224
M24	1.5	RC78244
Solid Steel - NC		
NC 5/16	18	RC73054
NC 9/16	12	RC73094
NC 5/8	11	RC73104
NC 3/4	10	RC73124
NC 7/8	14	RC73144
Solid Steel - UNC		
UNC 3/8	16	RC73064
UNC 1/2	13	RC73084

Size	Pitch	Item #
Solid Steel - UNF		
UNF 1	12	RC74164
UNF 1 1/4	12	RC74204
UNF 1 1/8	12	RC74184
UNF 1 3/8	12	RC74224
Stainless Steel - Metric		
M5	0.8	RC75056
M6	1	RC75066
M8	1.25	RC75086
M10	1.5	RC75106
M12	1.75	RC75126
M10	1.25	RC77106
M12	1.25	RC78126
Stainless Steel - NC		
NC 5/16	18	RC73056
NC 3/8	16	RC73066
NC 7/16	14	RC73076
NC 1/2	13	RC73086
NC 10	24	RC73606
Stainless Steel - NF		
NF 1/4	28	RC74046
NF 5/16	24	RC74056
NF 3/8	24	RC74066
Stainless Steel - UNF		
UNF 7/16	20	RC74076
UNF 1/2	20	RC74086
UNF 10	32	RC74606
Heavy Duty Stainless - Metric		
M4	0.7	RC75047
M5	0.8	RC75057
M6	1	RC75067
M8	1.25	RC75087
M10	1.5	RC75107
M12	1.75	RC75127
M14	2	RC75147
M16	2	RC75167
M24	3	RC75247
M8 X M12		RC77086
M8	1	RC77087
M10	1.25	RC77107
M14	1.5	RC77147
M16	1.5	RC77167
M24	2	RC77247
M12	1.25	RC78127
M18	1.5	RC78187

Keyserts



Application

Trucks, Rv's
Machinery
Small Engines
Moulds
Tool & Die
Mro Tasks

Keyserts are designed to repair damaged threads or for use in original equipment, and provide easy installation and versatility. Featuring a key-locking action that prevents rotation due to vibration or torsion, commercial grade Keyserts can be used in a wide range of materials and applications. Keyserts are available in carbon and stainless steel, and are supplied in thin wall and heavy duty styles.

Note: Keyserts are not recommended for use in brittle materials, such as cast iron or plastic.



Size	Pitch	Item #
M22	1.5	RC78227
Heavy Duty Stainless - NC		
NC 1/4	2	RC73047
NC 5/16	18	RC73057
NC 3/8	16	RC73067
NC 7/16	14	RC73077
NC 1/2	13	RC73087
NC 9/16	12	RC73097
NC 5/8	11	RC73107
NC 3/4	10	RC73127
NC 10	24	RC73607
Heavy Duty Stainless - NF		
NF 5/16	24	RC74052
NF		RC74047
Heavy Duty Stainless - UNC		
UNC 8	32	RC73587
Heavy Duty Stainless - UNF		
UNF 5/16	24	RC74057
UNF 3/8	20	RC74067
UNF 7/16	20	RC74077

Size	Pitch	Item #
UNF 1/2	2	RC74087
UNF 9/16	18	RC74097
UNF 5/8	18	RC74107
UNF 3/4	16	RC74127
Solid Stainless Steel - UNC		
UNC 3/8	16	RC73069
UNC 7/16	14	RC73079
UNC 1/2	13	RC73089
UNC 9/16	12	RC73099
UNC 5/8	11	RC73109
Solid Stainless Steel - UNF		
UNF 3/4	16	RC73129
UNF 7/8	14	RC73149
UNF 1	12	RC74169
UNF 1 1/8	12	RC74189
UNF 1 1/4	12	RC74209
UNF 1 3/8	12	RC74229
Thick Wall - Metric		
M4	0.7	RC71042
M24		RC71242

Size	Pitch	Item #
Thin Wall - Metric		
M8	1	RC77081
M10	1.25	RC77101
M12	1.25	RC78121
Thin Wall - NC		
NC 5/16	18	RC73051
NC 3/8	16	RC73061
NC 7/16	14	RC73071
NC 1/2	13	RC73081
NC 10	24	RC73601
Thin Wall - NF		
NF 1/4	28	RC74041
NF 5/16	24	RC74051
NF 3/8	24	RC74061
Thin Wall - UNF		
M14		RC71142
M18		RC71182
7/16	20	RC74071
1/2	30	RC74081
10	32	RC74601



Size	Pitch	Item #
Installation Tool - Heavy Duty Carbon Steel		
1 1/4		RC70202 ▲
8	32	RC70582
1		RC72100
10-24, 10-32, M5		RC72190
1/4, M6		RC72250
5/16, M8		RC72312
3/8, 7/16, M10		RC72375
1/2, 9/16, M12		RC72500
5/8, M16		RC72625
3/4, 7/8, M20, M22		RC72875



Size	Item #
Range Kits - Metric Coarse	
4 Pce Carbon	RC75003 ▲
4 Pce Stainless Steel	RC75004 ▲
Range Kits - UNC	
6 Pce Stainless Steel	RC70003 ▲
15 Pce Stainless Steel	RC73003 ▲
Stainless Steel	RC76003 ▲

Insert Taps Taper



RECOIL™ Taps are used with RECOIL™ Inserts. RECOIL™ Taps are manufactured to precise standards from High Speed steel (HSS) with ground threads and are available in Taper, Intermediate and Bottoming leads. They have a large diameter but the same pitch as a standard tap in order to accommodate the RECOIL™ Inserts. Made from HSS.



Size	Pitch	Item #
Taper - Metric		
M2	0.4	RC45024 ▲
M3	0.5	RC45034
M4	0.7	RC45044
M5	0.8	RC45054
M6	1	RC45064
M7	1	RC45074
M8	1.25	RC45084
M9	1.25	RC45094 ▲
M10	1.5	RC45104
M11	1.5	RC45114
M12	1.75	RC45124
M14	2	RC45144
M16	2	RC45164
M18	2.5	RC45184
M20	2.5	RC45204 ▲
M22	2.5	RC45224 ▲
M24	3	RC45244 ▲
M2.5	0.45	RC45254 ▲
M27	3	RC45274 ▲
M30	3.5	RC45304 ▲
M33	3.5	RC45334 ▲
M3.5	0.6	RC45354 ▲
M36	4	RC45364
M39	4	RC45394 ▲
M42	4.5	RC45424 ▲
M8	1	RC47084
M10	1.25	RC47104
M11	1.25	RC47114 ▲
M12	1.5	RC47124 ▲
M14	1.5	RC47144 ▲
M16	1.5	RC47164
M18	2	RC47184
M20	2	RC47204 ▲
M24	2	RC47244 ▲
M27	2	RC47274 ▲
M30	2	RC47304 ▲
M36	3	RC47364 ▲
M10	1	RC48104 ▲
M11	1	RC48114 ▲
M12	1.25	RC48124
M12	1	RC481241 ▲
M14	1.25	RC48144
M18	1.5	RC48184
M20	1.5	RC48204 ▲
M22	1.5	RC48224
M24	1.5	RC48244 ▲
M26	1.5	RC48264 ▲
M27	1.5	RC48274 ▲
M30	1.5	RC48304 ▲
M39	2	RC48394 ▲

Size	Pitch	Item #
Taper - BA		
Screw #2		RC40524 ▲
Screw #4		RC40544 ▲
Screw #6		RC40564 ▲
Taper - BSC		
BSC 5/16	26	RC46504 ▲
BSC 3/8	26	RC46604 ▲
Taper - BSF		
BSF 3/16	32	RC40034 ▲
BSF 1/4	26	RC40044
BSF 5/16	22	RC40054 ▲
BSF 3/8	20	RC40064 ▲
BSF 7/16	18	RC40074 ▲
BSF 1/2	16	RC40084 ▲
BSF 9/16	16	RC40094 ▲
BSF 5/8	14	RC40104 ▲
BSF 1	10	RC40164 ▲
Taper - BSP		
BSP 1/8	28	RC41024
BSP 1/4	19	RC41044
BSP 3/8	19	RC41064
BSP 1/2	14	RC41084
BSP 5/8	14	RC41104 ▲
BSP 3/4	14	RC41124 ▲
BSP 1	11	RC41164 ▲
Taper - BSW		
BSW 1/8	40	RC42024 ▲
BSW 3/16	24	RC42034 ▲
BSW 1/4	20	RC42044
BSW 5/16	18	RC42054 ▲
BSW 3/8	16	RC42064
BSW 7/16	14	RC42074 ▲
BSW 1/2	12	RC42084 ▲
BSW 9/16	12	RC42094 ▲
BSW 5/8	11	RC42104 ▲
BSW 3/4	10	RC42124 ▲
BSW 1	8	RC42164 ▲
BSW 1 1/8	7	RC42184 ▲
BSW 1 3/8	6	RC42224 ▲
BSW 1 1/2	6	RC42244 ▲
Taper - NPT		
NPT 3/8	18	RC46064 ▲
Taper - UN		
UN 1/4	24	RC4404424 ▲
UN 7/16	16	RC4407416 ▲
UN 1 1/8	8	RC46184 ▲
UN 1 1/4	8	RC46204 ▲
UN 1 3/8	8	RC46224 ▲

Size	Pitch	Item #
UN 1 5/8	8	RC46264 ▲
UN 1 3/4	8	RC46284 ▲
UN 2	8	RC46324 ▲
Taper - UNC		
UNC 1/4	20	RC43044
UNC 5/16	18	RC43054
UNC 3/8	16	RC43064
UNC 7/16	14	RC43074
UNC 1/2	13	RC43084
UNC 9/16	12	RC43094
UNC 5/8	11	RC43104
INTER UNC 11/16	11	RC43115 ▲
UNC 7/8	9	RC43144
UNC 1	8	RC43164
UNC 1 1/4	7	RC43204
UNC 1 3/8	6	RC43224 ▲
UNC 1 1/2	6	RC43244 ▲
UNC 2	56	RC43524 ▲
UNC 3	48	RC43534 ▲
UNC 4	40	RC43544
UNC 5	40	RC43554 ▲
UNC 6	32	RC43564
UNC 8	32	RC43584
UNC 10	24	RC43604 ▲
UNC 12	24	RC43624 ▲
Taper - UNF		
UNF 1/4	28	RC44044 ▲
UNF 5/16	24	RC44054
UNF 3/8	24	RC44064
UNF 7/16	20	RC44074 ▲
UNF 1/2	20	RC44085
UNF 9/16	18	RC44094
UNF 5/8	18	RC44104
UNF 3/4	16	RC44124
UNF 7/8	14	RC44144
UNF 1	12	RC44164
UNF 1 1/8	12	RC44184 ▲
UNF 1 3/8	12	RC44224 ▲
UNF 1 1/2	12	RC44244 ▲
UNF 3	56	RC44534 ▲
UNF 4	48	RC44544 ▲
UNF 8	36	RC44584
UNF 10	32	RC44604
UNF 12	28	RC44624 ▲
Taper - UNS		
UNS 1	14	RC4416414 ▲
Taper - UNEF		
UNEF 1/4	32	RC4404432 ▲
UNEF 7/8	20	RC4414420 ▲

Insert Taps Intermediate



RECOIL™ Taps are used with RECOIL™ Inserts. RECOIL™ Taps are manufactured to precise standards from High Speed Steel (HSS) with ground threads and are available in Taper, Intermediate and Bottoming leads. They have a large diameter but the same pitch as a standard tap in order to accommodate the RECOIL™ Inserts. Made from HSS.



Size	Pitch	Item #
Intermediate - Metric		
M2.2	0.45	RC45015
M2	0.4	RC45025
M3	0.5	RC45035
M4	0.7	RC45045
M5	0.8	RC45055
M6	1	RC45065
M7	1	RC45075
M8	1.25	RC45085
M9	1.25	RC45095
M10	1.5	RC45105
M11	1.5	RC45115
M12	1.75	RC45125
M13	1.75	RC45135
M14	2	RC45145
M15	2	RC45155 ▲
M16	2	RC45165
M18	2.5	RC45185
M20	2.5	RC45205
M22	2.5	RC45225
M24	3	RC45245
M2.5	0.45	RC45255
M27	3	RC45275
M30	3.5	RC45305
M30	3	RC453053
M33	3.5	RC45335
M3.5	0.6	RC45355
M36	4	RC45365
M39	4	RC45395 ▲
M42	4.5	RC45425
M42	4.5	RC454254 ▲
M8	1	RC47085
M8	1	RC47095
M10	1.25	RC47105
M11	1.25	RC47115
M12	1.5	RC47125
M13	1.5	RC47135
M14	1.5	RC47145
M15	1.5	RC47155
M16	1.5	RC47165
M18	2	RC47185
M20	2	RC47205
M22	2	RC47225 ▲
M24	2	RC47245
M27	2	RC47275
M30	2	RC47305
M33	2	RC47335
M36	3	RC47365
M39	3	RC47395 ▲
M42	3	RC47425 ▲
M8	0.75	RC48085 ▲
M10	1	RC48105
M11	1	RC48115
M12	1.25	RC48125

Size	Pitch	Item #
M12	1	RC481251
M13	1.25	RC48135 ▲
M14	1.25	RC48145
M18	1.5	RC48185
M20	1.5	RC48205
M22	1.5	RC48225
M24	1.5	RC48245
M26	1.5	RC48265 ▲
M27	1.5	RC48275 ▲
M30	1.5	RC48305 ▲
M36	1.5	RC48365 ▲
M39	2	RC48395 ▲
M42	2	RC48425 ▲
Intermediate - Metric (Left Hand)		
M6	1	RC45065LH ▲
M8	1.25	RC45085LH ▲
M10	1.5	RC45105LH ▲
M12	1.75	RC45125LH ▲
Intermediate - Metric Coarse		
M2.3	0.45	RC45235
M2.6	0.45	RC45265
Intermediate - Metric Coarse (Left Hand)		
M20	2.5	RC45205LH ▲
Intermediate - BA		
Screw #0		RC40505 ▲
Screw #2		RC40525
Screw #4		RC40545
Screw #6		RC40565 ▲
Intermediate - BSC		
BSC 5/16	26	RC46505 ▲
BSC 3/8	26	RC46605 ▲
BSC 7/16	26	RC46705 ▲
BSC 1/2	26	RC46805 ▲
Intermediate - BSF		
BSF 3/16	32	RC40035 ▲
BSF 1/7	26	RC40045
BSF 5/16	22	RC40055
BSF 3/8	20	RC40065
BSF 7/16	18	RC40075
BSF 1/2	16	RC40085 ▲
BSF 9/16	16	RC40095 ▲
BSF 5/8	14	RC40105 ▲
BSF 3/4	12	RC40125 ▲
BSF 7/8	11	RC40145 ▲
BSF 1	10	RC40165 ▲
BSF 1 1/4	9	RC40205 ▲

Size	Pitch	Item #
Intermediate - BSP		
BSP 1/8	28	RC41025
BSP 1/4	19	RC41045
BSP 3/8	19	RC41065
BSP 1/2	14	RC41085
BSP 5/8	14	RC41105 ▲
BSP 3/4	14	RC41125
BSP 1	11	RC41165 ▲
Intermediate - BSW		
BSW 1/8	40	RC42025
BSW 3/16	24	RC42035
BSW 1/4	20	RC42045
BSW 5/16	18	RC42055
BSW 3/8	16	RC42065
BSW 7/16	14	RC42075
BSW 1/2	12	RC42085
BSW 9/16	12	RC42095 ▲
BSW 5/8	11	RC42105
BSW 3/4	10	RC42125
BSW 1	8	RC42165 ▲
BSW 1 1/8	7	RC42185 ▲
BSW 1 1/4	7	RC42205 ▲
BSW 1 3/8	6	RC42225 ▲
BSW 1 1/2	6	RC42245 ▲
Intermediate - NPT		
NPT 1/8	1.12	RC46025
NPT 1/4	1.12	RC46045
NPT 3/8	18	RC46065 ▲
NPT 1/2	14	RC46085
NPT 3/4	14	RC46125
Intermediate - UN		
UN 1/4	24	RC4404524
UN 7/16	16	RC4407516
UN 7/8	20	RC4414520
UN 1 1/8	8	RC46185 ▲
UN 1 1/4	8	RC46205
UN 1 3/8	8	RC46225 ▲
UN 1 1/2	8	RC46245 ▲
UN 1 5/8	8	RC46265 ▲
UN 1 3/4	8	RC46285 ▲
UN 1 7/8	8	RC46305 ▲
UN 2	8	RC46325 ▲
Intermediate - UNC		
UNC 1/4	20	RC43045
UNC 5/16	18	RC43055
UNC 3/8	16	RC43065
UNC 7/16	14	RC43075
UNC 1/2	13	RC43085
UNC 9/16	12	RC43095
UNC 5/8	11	RC43105

Insert Taps Intermediate



RECOIL™ Taps are used with RECOIL™ Inserts. RECOIL™ Taps are manufactured to precise standards from High Speed Steel (HSS) with ground threads and are available in Taper, Intermediate and Bottoming leads. They have a large diameter but the same pitch as a standard tap in order to accommodate the RECOIL™ Inserts. Made from HSS.



Size	Pitch	Item #
TAPER UNC 3/4	10	RC43124
UNC 7/8	9	RC43145
UNC 1	8	RC43165
UNC 1 1/8	7	RC43185
UNC 1 1/4	7	RC43205
UNC 1 3/8	6	RC43225 ▲
UNC 1 1/2	6	RC43245
UNC 2	56	RC43525
UNC 3	48	RC43535 ▲
UNC 4	40	RC43545
UNC 5	40	RC43555
UNC 6	32	RC43565
UNC 8	32	RC43585
UNC 10	24	RC43605
UNC 12	24	RC43625
UNC 1/4	20	RC43045LH ▲

Size	Pitch	Item #
UNC 3/8	16	RC43065LH ▲
Intermediate - UNEF		
UNEF 1/4	32	RC4404532
UNEF 1	20	RC4416520 ▲
Intermediate - UNF		
UNF 1/4	28	RC44045
UNF 5/16	24	RC44055
UNF 3/8	24	RC44065
UNF 7/16	20	RC44075
TAPER UNF 1/2	20	RC44084
UNF 9/16	18	RC44095
UNF 5/8	18	RC44105
UNF 3/4	16	RC44125
UNF 7/8	14	RC44145

Size	Pitch	Item #
UNF 1	12	RC44165
UNF 11/8-12	12	RC44185
UNF 1 1/4	12	RC44205
UNF 1 3/8	12	RC44225 ▲
UNF 1 1/2	12	RC44245 ▲
UNF 3	56	RC44535
UNF 4	48	RC44545
UNF 6	40	RC44565
UNF 8	36	RC44585
UNF 10	32	RC44605
UNF 12	28	RC44625
Intermediate - UNS		
UNS 11/16	16	RC4411516
UNS 1	14	RC4416514

Insert Taps Bottoming



RECOIL™ Taps are used with RECOIL™ Inserts. RECOIL™ Taps are manufactured to precise standards from High Speed steel (HSS) with ground threads and are available in Taper, Intermediate and Bottoming leads. They have a large diameter but the same pitch as a standard tap in order to accommodate the RECOIL™ Inserts. Made from HSS.



Size	Pitch	Item #
Bottoming - Metric		
M2.2	0.45	RC45016 ▲
M2	0.4	RC45026
M3	0.5	RC45036
M4	0.7	RC45046
M5	0.8	RC45056
M6	1	RC45066
M7	1	RC45076
M8	1.25	RC45086
M9	1.25	RC45096
M10	1.5	RC45106
M11	1.5	RC45116
M12	1.75	RC45126
M14	2	RC45146
M15	2	RC45156 ▲
M16	2	RC45166
M18	2.5	RC45186
M20	2.5	RC45206 ▲
M22	2.5	RC45226 ▲
M24	3	RC45246

Size	Pitch	Item #
M2.5	0.45	RC45256
M27	3	RC45276 ▲
M30	3.5	RC45306
M33	3.5	RC45336 ▲
M3.5	0.6	RC45356
M36	4	RC45366 ▲
M39	4	RC45396 ▲
M42	4.5	RC45426 ▲
M8	1	RC47086
M9	1	RC47096 ▲
M10	1.25	RC47106
M11	1.25	RC47116 ▲
M12	1.5	RC47126 ▲
M14	1.5	RC47146 ▲
M15	1.5	RC47156 ▲
M16	1.5	RC47166
M18	2	RC47186 ▲
M20	2	RC47206 ▲
M22	2	RC47226 ▲
M24	2	RC47246 ▲

Size	Pitch	Item #
M30	2	RC47306 ▲
M33	2	RC47336
M36	3	RC47366 ▲
M39	3	RC47396 ▲
M42	3	RC47426 ▲
M10	1	RC48106 ▲
M11	1	RC48116
M12	1.25	RC48126 ▲
M12	1	RC481261 ▲
M14	1.25	RC48146 ▲
M18	1.5	RC48186
M20	1.5	RC48206
M22	1.5	RC48226 ▲
M24	1.5	RC48246
M26	1.5	RC48266 ▲
M30	1.5	RC48306 ▲
M39	2	RC48396 ▲
M42	2	RC48426 ▲

Insert Taps Bottoming



RECOIL™ Taps are used with RECOIL™ Inserts. RECOIL™ Taps are manufactured to precise standards from High Speed steel (HSS) with ground threads and are available in Taper, Intermediate and Bottoming leads. They have a large diameter but the same pitch as a standard tap in order to accommodate the RECOIL™ Inserts. Made from HSS.



Size	Pitch	Item #
Bottoming - Metric Medium (Left Handed)		
M10	1.25	RC47106LH ▲
Bottoming - BA		
Screw #0		RC40506 ▲
Screw #2		RC40526
Screw #4		RC40546
Screw #6		RC40566 ▲
Bottoming - BSC		
BSC 5/16	26	RC46506 ▲
BSC 3/8	26	RC46606 ▲
BSC 7/16	26	RC46706 ▲
BSC 1/2	26	RC46806 ▲
Bottoming - BSF		
BSF 3/16	32	RC40036 ▲
BSF 1/4	26	RC40046
BSF 5/16	22	RC40056
BSF 7/16	18	RC40076 ▲
BSF 1/2	16	RC40086 ▲
BSF 9/16	16	RC40096 ▲
BSF 5/8	14	RC40106 ▲
BSF 3/4	12	RC40126 ▲
BSF 7/8	11	RC40146 ▲
BSF 1	10	RC40166 ▲
Bottoming - BSP		
BSP 1/8	28	RC41026
BSP 1/4	19	RC41046
BSP 3/8	19	RC41066
BSP 1/2	14	RC41086
BSP 5/8	14	RC41106 ▲
BSP 3/4	14	RC41126 ▲
BSP 1	11	RC41166 ▲
Bottoming - BSW		
BSW 1/8	40	RC42026 ▲
BSW 3/16	24	RC42036
BSW 1/4	20	RC42046 ▲
BSW 5/16	18	RC42056 ▲
BSW 3/8	16	RC42066 ▲

Size	Pitch	Item #
BSW 7/16	14	RC42076
BSW 1/2	12	RC42086
BSW 9/16	12	RC42096 ▲
BSW 5/8	11	RC42106 ▲
BSW 3/4	10	RC42126 ▲
BSW 1	8	RC42166 ▲
BSW 1 1/8	7	RC42186 ▲
BSW 1 1/4	7	RC42206 ▲
BSW 1 3/8	6	RC42226 ▲
BSW 1 1/2	6	RC42246 ▲
Bottoming - NPT		
NPT 1/8	27	RC46026
NPT 1/4	18	RC46046 ▲
NPT 3/8	18	RC46066 ▲
NPT 1/2	14	RC46086
NPT 3/4	14	RC46126 ▲
Bottoming - UN		
UN 1/4	24	RC4404624 ▲
UN 1 1/4	8	RC46206 ▲
UN 1 3/8	8	RC46226 ▲
UN 1 1/2	8	RC46246 ▲
UN 1 5/8	8	RC46266 ▲
UN 1 3/4	8	RC46286 ▲
UN 1 7/8	8	RC46306 ▲
UN 2	8	RC46326 ▲
Bottoming - UNC		
UNC 1/4	20	RC43046
UNC 5/16	18	RC43056
UNC 3/8	16	RC43066
UNC 7/16	14	RC43076
UNC 1/2	13	RC43086
UNC 9/16	12	RC43096
UNC 5/8	11	RC43106
INTER UNC 3/4	10	RC43125
UNC 3/4	10	RC43126
UNC 7/8	9	RC43146
UNC 1	8	RC43166
UNC 1 1/8	7	RC43186 ▲
UNC 1 1/4	7	RC43206

Size	Pitch	Item #
UNC 1 1/2	6	RC43246 ▲
UNC 2	56	RC43526 ▲
UNC 3	48	RC43536 ▲
UNC 4	40	RC43546
UNC 5	40	RC43556
UNC 6	32	RC43566
UNC 8	32	RC43586
UNC 10	24	RC43606
UNC 12	24	RC43626 ▲
Bottoming - UNF		
UNF 1/4	28	RC44046 ▲
UNF 5/16	24	RC44056
UNF 3/8	24	RC44066
UNF 7/16	20	RC44076
UNF 1/2	20	RC44086
UNF 9/16	18	RC44096 ▲
UNF 5/8	18	RC44106 ▲
UNF 3/4	16	RC44126
UNF 7/8	14	RC44146
UNF 1	12	RC44166
UNF 11/8-12	12	RC44186 ▲
UNF 1 1/2	12	RC44246 ▲
UNF 3	56	RC44536 ▲
UNF 4	48	RC44546
UNF 6	40	RC44564
UNF 6	40	RC44566
UNF 8	36	RC44586
UNF 10	32	RC44606
UNF 12	28	RC44626
Bottoming - UNEF		
UNEF 1/4	32	RC4404632 ▲
UNEF 7/8	20	RC4414620 ▲
UNEF 1	20	RC4416620 ▲
Bottoming - UNS		
UNS 1	14	RC4416614 ▲

Insert Taps Spiral Flute



RECOIL™ Taps are used with RECOIL™ Inserts . RECOIL™ Taps are manufactured to precise standards from High Speed Steel (HSS) with ground threads and are available in Taper, Intermediate and Bottoming leads. They have a large diameter but the same pitch as a standard tap in order to accommodate the RECOIL™ Inserts. Made from HSS.



Size	Pitch	Item #
Spiral Flute - Metric		
M2.2	0.45	RC45019
M2	0.4	RC45029
M3	0.5	RC45039
M5	0.8	RC45059
M6	1	RC45069
M8	1.25	RC45089
M10	1.5	RC45109
M12	1.75	RC45129
M14	2	RC45149
M16	2	RC45169 ▲
M18	2.5	RC45189
M20	2.5	RC45209
M24	3	RC45249 ▲
M2.5	0.45	RC45259
M3.5	0.6	RC45359 ▲
M8	1	RC47089
M10	1.25	RC47109
M12	1.5	RC47129 ▲
M14	1.5	RC47149 ▲

Size	Pitch	Item #
M16	1.5	RC47169 ▲
Spiral Flute - Metric Coarse		
M11	1.5	RC45119
Spiral Flute - Metric Fine		
M10	1	RC48109
Spiral Flute - UNC		
UNC 1/4	20	RC43049
UNC 5/16	18	RC43059
UNC 7/16	14	RC43079
UNC 1/2	13	RC43089
UNC 5/8	11	RC43109
UNC 3/4	10	RC43129
UNC 7/8	9	RC43149 ▲
UNC 1	8	RC43169
UNC 2	56	RC43529
UNC 3	48	RC43539 ▲
UNC 4	40	RC43549

Size	Pitch	Item #
UNC 5	40	RC43559
UNC 6	32	RC43569
UNC 8	32	RC43589
UNC 10	24	RC43609
UNC 12	24	RC43629
UNC 1/4	28	RC44049
UNC 5/16	24	RC44059
UNC 3/8	24	RC44069
UNC 7/16	20	RC44079
UNC 1/2	20	RC44089
UNC 5/8	18	RC44109
UNC 3/4	16	RC44129 ▲
UNC 4	48	RC44549
UNC 6	40	RC44569
UNC 8	36	RC44589
UNC 10	32	RC44609
Spiral Flute - UNF		
UNF 9/16	18	RC44099

Insert Taps Spiral Point



RECOIL™ Taps are used with RECOIL™ Inserts . RECOIL™ Taps are manufactured to precise standards from High Speed Steel (HSS) with ground threads and are available in Taper, Intermediate and Bottoming leads. They have a large diameter but the same pitch as a standard tap in order to accommodate the RECOIL™ Inserts. Made from HSS.



Size	Pitch	Item #
Spiral Point - Metric		
M2.2	0.45	RC45018 ▲
M2	0.4	RC45028
M3	0.5	RC45038
M4	0.7	RC45048
M5	0.8	RC45058
M6	1	RC45068
M8	1.25	RC45088
M10	1.5	RC45108 ▲
M12	1.75	RC45128 ▲
M14	2	RC45148
M16	2	RC45168 ▲
M18	2.5	RC45188
M20	2.5	RC45208 ▲
M24	3	RC45248 ▲
M2.5	0.45	RC45258 ▲
M3.5	0.6	RC45358
M8	1	RC47088 ▲

Size	Pitch	Item #
M10	1.25	RC47108
M12	1.5	RC47128 ▲
M14	1.5	RC47148
M16	1.5	RC47168 ▲
Spiral Point - UNC		
UNC 1/4	20	RC43048 ▲
UNC 5/16	18	RC43058
UNC 3/8	16	RC43068
UNC 7/16	14	RC43078 ▲
UNC 1/2	13	RC43088
UNC 5/8	11	RC43108 ▲
UNC 3/4	10	RC43128
UNC 7/8	9	RC43148 ▲
UNC 2	56	RC43528
UNC 4	40	RC43548
UNC 5	40	RC43558
UNC 6	32	RC43568

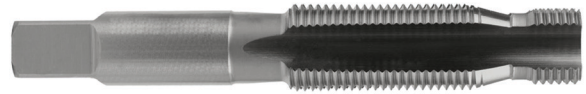
Size	Pitch	Item #
UNC 8	32	RC43588
UNC 10	24	RC43608 ▲
UNC 12	24	RC43628 ▲
Spiral Point - UNF		
UNF 1/4	28	RC44048 ▲
UNF 5/16	24	RC44058
UNF 3/8	24	RC44068
UNF 7/16	20	RC44078 ▲
UNF 1/2	20	RC44088 ▲
UNF 5/8	18	RC44108 ▲
UNF 3/4	16	RC44128 ▲
UNF 4	48	RC44548 ▲
UNF 6	40	RC44568 ▲
UNF 8	36	RC44588 ▲
UNF 10	32	RC44608

Insert Taps Plug Nose



RECOIL™ Taps are used with RECOIL™ Inserts . RECOIL™ Taps are manufactured to precise standards from High Speed Steel (HSS) with ground threads and are available in Taper, Intermediate and Bottoming leads. They have a large diameter but the same pitch as a standard tap in order to accommodate the RECOIL™ Inserts. Made from HSS.

Size	Pitch	Item #
Plug Nose - Metric		
M6	1	RC45067
M8	1.25	RC45087
M10	1.5	RC45107
M12	1.75	RC45127
M10	1.25	RC47107
M10	1	RC48107
M12	1.25	RC48127
M14	1.25	RC48147
M18	1.5	RC48187



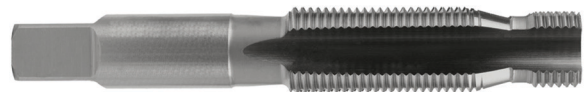
Insert Taps Pilot Nose



RECOIL™ Taps are used with RECOIL™ Inserts . RECOIL™ Taps are manufactured to precise standards from High Speed steel (HSS) with ground threads and are available in Taper, Intermediate and Bottoming leads. They have a large diameter but the same pitch as a standard tap in order to accommodate the RECOIL™ Inserts.

Manufactured to precise standards from High Speed Steel (HSS) with ground threads. Larger diameter, but the same pitch, as a standard tap in order to accommodate the wire insert.

Size	Pitch	Item #
Pilot Nose - Metric Coarse		
M5	0.8	RC45057
M9	1.25	RC45097
Pilot Nose - Metric Fine		
M18	1.5	RC48183
Pilot Nose - Metric Medium		
M14	1.5	RC47147



Thread Gauge



RECOIL™ gauges measure the tapped hole to ensure optimum insert performance once installed. Thread gauging is recommended wherever precision threads are required. If the finished tapped hole gauges satisfactorily, the installed insert will be within the thread tolerance.

Measures the tapped hole to ensure optimum insert performance once installed.

Made from Stainless Steel.



Size	Pitch	Item #
Thread Gauge - Metric		
M2.2	0.45	RC65014 ▲
M2	0.4	RC65024 ▲
M2	0.4	RC65025 ▲
M3	0.5	RC65034 ▲
M3	0.5	RC65035 ▲
M4	0.7	RC65044 ▲
M4	0.7	RC65045 ▲
M5	0.8	RC65054 ▲
M5	0.8	RC65055 ▲
M6	1	RC65064 ▲
M6	1	RC65065 ▲
M7	1	RC65074 ▲
M7	1	RC65075 ▲
M8	1.25	RC65084 ▲
M8	1.25	RC65085 ▲
M10	1.5	RC65104 ▲
M10	1.5	RC65105 ▲
M12	1.75	RC65124 ▲
M12	1.75	RC65125 ▲
M14	2	RC65145 ▲
M16	2	RC65164 ▲
M16	2	RC65165 ▲
M20	2.5	RC65205 ▲
M24	3	RC65244 ▲
M24	3	RC65245 ▲
M2.5	0.45	RC65254 ▲
M2.5	0.45	RC65255 ▲
M27	3	RC65275 ▲
M30	3.5	RC65304 ▲
M8	1	RC67084 ▲
M10	1.25	RC67105 ▲
M12	1.5	RC67125 ▲
M14	1.5	RC67145 ▲
M10	1	RC68105 ▲
M12	1.25	RC68125 ▲
Thread Gauge - BSW		
BSW 1/4	20	RC62042 ▲
Thread Gauge - NC		
NC 1/2	13	RC63082 ▲
NC 1/2	13	RC63083 ▲
NC 3/4	10	RC63123 ▲
Thread Gauge - NF		
NF 3/8	24	RC64063 ▲
NF 1 1/8	12	RC64183 ▲

Size	Pitch	Item #
Thread Gauge - NPT		
NPT 1/8	27	RC66023 ▲
NPT 1/2	14	RC66083 ▲
NPT 3/4		RC66123 ▲
Thread Gauge - UNC		
UNC 1/4	20	RC63042 ▲
UNC 1/4	20	RC63043 ▲
UNC 5/16	18	RC63052 ▲
UNC 5/16	18	RC63053 ▲
UNC 3/8	16	RC63062 ▲
UNC 2	56	RC63522 ▲
UNC 3	48	RC63532 ▲
UNC 4	40	RC63542 ▲
UNC 6	32	RC63562 ▲
UNC 6	32	RC63563 ▲
UNC 8	32	RC63582 ▲
UNC 8	32	RC63583 ▲
UNC 10	24	RC63602 ▲
UNC 10	24	RC63603 ▲
UNC 12	24	RC63622 ▲
UNC 8	36	RC64583 ▲
Thread Gauge - UNF		
UNF 1/4	28	RC64042 ▲
UNF 1/4	28	RC64043 ▲
UNF 5/16	24	RC64052 ▲
UNF 5/16	24	RC64053 ▲
UNF 3/8	24	RC64062 ▲
UNF 7/16	20	RC64072 ▲
UNF 1/2	20	RC64082 ▲
UNF 1/2	18	RC64083 ▲
UNF 9/16	18	RC64092 ▲
UNF 5/8	18	RC64102 ▲
UNF 5/8	16	RC64103 ▲
UNF 3/14	16	RC64122 ▲
UNF 3/14	14	RC64123 ▲
UNF 7/8	36	RC64143 ▲
UNF 8	36	RC64582 ▲
UNF 10	32	RC64602 ▲
UNF 10	24	RC64603 ▲
Screw Pitch Gauge		
UNC		RC63000
Metric		RC65000
Metric / UNC		RC69000

Hand Tools Manual Installation Tools



The manual installation tool is the most practical and simple to use for general applications. This tool may be used to install 1D through to 3D length inserts. Featuring an adjustable collar to suit 1D-3D inserts and a square drive for trapping.

Ideal for installing inserts in a small production run Suitable for use when installing free running and locking inserts Adjustable collar.



Size	Pitch	Item #
Metric		
M2	0.4	RC5006120 ▲
M2	0.45	RC5006121 ▲
M3	0.5	RC5008917 ▲
M3.5		RC5009515 ▲
M4	0.7	RC5012513 ▲
M5	0.8	RC501569 ▲
M6-1, BSW 1/4-20, BSF 1/4-26, OBA		RC501885 ▲
M7	1	RC502194 ▲
M8-1, M8-1.25, BSF 5/16-22		RC502507
M10-1.5, NC 3/8-16		RC502814
M9-1, M9-1.25, BSW 3/8-16		RC502815
M10	1	RC5031312 ▲
M11-1, M11-1.25, M11-1.5, BSF 7/16-18, BSC 7/16-26		RC503444 ▲
M12-1, M12-1.75 LH, M13-1.25, M13-1.5, M13-1.75		RC503750
M12-1.25, M12-1.5, M12-1.75, BSW 1/2-12, BSF 1/2-16, BSC 1/2-26		RC503751
M14-1.5, M14-2, M15-1.5, M15-2, NC 9/16-12, NF 9/16-18, 9/16-20, BSW 9/16-12, BSF 9/16-16, BSP 1/4-19, NPT 1/4-18		RC504380
M14	1.25	RC504680
M16-1.5, M16-2, NC 5/8-11, NC 11/16-11, NF 5/8-18, BSW 5/8-11, BSF 5/8-14, BSP 3/8-19, NPT 3/8-18		RC505000
M18 - M20, NC 3/4-10, NF 3/4-16, BSW 3/4-10, BSF 3/4-12		RC505910
M22, NC 7/8-9, NF 7/8-14, 7/8-12, 7/8-20, BSW 7/8-9, BSF 7/8-11, BSP 1/2-14, NPT 1/2-14		RC50688
M24, NC 1-8, NF 1-12, NF 1-14, BSW 1-8, BSF 1-10, Special 1-20		RC50750
M26 - M27, NC 1-1/8-7, BSW 1-1/8-7, BSW 1-3/8-6, BSP 5/8-14, NPT 3/4-14, UN 1-1/8-8		RC50875
M30, NC 1-1/4-7, NF 1-1/8-12, BSW 1-1/4-7, BSF 1-1/4-9, UN 1-1/4-8		RC51000
M33, NF 1-1/4-12, NC 1-3/8-6, UN 1-3/8-8		RC51063
M39 - M45, NF 1-1/2-12, UN 1-5/8-8		RC51250

Size	Pitch	Item #
BSC		
BSC 5/16	26	RC502504
BSC 3/8-26, BSP 1/8-28		RC503135
BSC 5/16	22	RC502505
BSW		
BSW 1/8	40	RC5008919 ▲
BSW 3/16	24	RC501409 ▲
BSW 7/16	14	RC503441 ▲
UNC		
UNC #2 - 56		RC5006117 ▲
UNC #3-48		RC5006917 ▲
UNC #4-40		RC5007717 ▲
UNC #5-40		RC5008918 ▲
UNC #6-32		RC5009516 ▲
UNC #8-32, NF #8-36		RC5012514 ▲
UNC #10-24		RC5014011 ▲
UNC #12-24, NF #12-28		RC5015610 ▲
UNC 1/4-20, NF 1/4-28		RC5018810 ▲
UNC 5/16-18		RC502198 ▲
UNC 7/16-14, Special 7/16-16, 7/16-24		RC503443 ▲
UNC 1/2-13		RC503752
UNF		
UNF #6-40		RC5009517 ▲
UNF #10-32		RC5015611 ▲
UNF 5/16	24	RC502508
UNF 3/8	24	RC503136
UNF 1/2	20	RC503753 ▲
Removal Tool		
2-56-3/8, M2-M10		RC50002
M4-M24, NC #6-1		RC50003
1 - 11/2, M24 - M36		RC50004
M38 - M65		RC50005

Hand Tools Pre Winder



This type of RECOIL™ tool is ideal for installing inserts in small production runs or in areas where compressed air or electricity are not available and offers a quicker alternative to the simple hand installation tool. The RECOIL™ tool is suitable for use when installing free running and locking inserts.

Ideal for installing inserts in small production runs or in areas where compressed air or electricity are not available and offers a quicker alternative to the simple hand installation tool.



Size	Pitch	Item #
Metric		
M2	0.4	RC55021
M3	0.5	RC55031
M4	0.7	RC55041
M5	0.8	RC55051
M6	1	RC55061
M6	1	RC55062U
M7	1	RC55071
M8	1.25	RC55081
M8	1.25	RC55082U
M10	1.5	RC55101
M10	1.5	RC55102U
M12	1.75	RC55121
M12	1.75	RC55122U
M14	2	RC55146
M16	2	RC55161
M2.5	0.45	RC55251
M8	1	RC57081
M10	1.25	RC57101
M10	1.25	RC57102U
M12	1.5	RC57121
M12	1.5	RC57122U
M14	1.5	RC57141
M16	1.5	RC57161
M10	1	RC58101
M12	1.25	RC58121
M18	1.5	RC58181
Metric - Mandrel		
M16	2	RC55166
M18	2.5	RC55186
Front Nozzle		
		RC55258 ▲

Size	Pitch	Item #
NC		
1/4	20	RC53041
1/4	20	RC53042U
5/16	18	RC53051
5/16	18	RC53052U
3/8	16	RC53061
3/8	16	RC53062U
7/16	14	RC53071
7/16	14	RC53072U
1/2	13	RC53081
1/2	13	RC53082U
2	56	RC53521
4	40	RC53541
4	40	RC53542U
5	40	RC53551
6	32	RC53561
6	32	RC53562U
8	32	RC53581
8	32	RC53582U
10	24	RC53601
12	24	RC53621
3	56	RC54531
4	48	RC54541
NC - Mandrel		
3/4	10	RC53126
NF		
3/8	24	RC54061
3/8	24	RC54062U
5/8	18	RC54101
UN		
1 1/4	8	RC56201

Size	Pitch	Item #
1 1/2	8	RC56241
1 3/4	8	RC56281
2	8	RC56321
3	8	RC56481
UNC		
5/8	11	RC53101
3/4	10	RC53121
7/8	9	RC53141
1	8	RC53161
UNC - Mandrel		
5/8	11	RC53106
7/8	9	RC53146
1	8	RC53166
3	48	RC53536 ▲
UNF		
1/4	28	RC54041
1/4	28	RC54042U
5/16	24	RC54051
5/16	24	RC54052U
7/16	20	RC54071
7/16	20	RC54072U
1/2	20	RC54081
1/2	20	RC54082U
9/16	18	RC54091
3/4	16	RC54121 ▲
7/8	14	RC54141
1 1/8	12	RC54181 ▲
6	40	RC54561
8	36	RC54581
10	32	RC54601

Hand Tools Pneumatic Power Tools



The RECOIL™ range of power tooling ensures consistent high volume thread insert installation for a variety of applications. RECOIL™ powered installation tools may be supplied for use with either a compressed air supply or via a stabilized low voltage power supply to suit your particular requirements. Both equipment types offer significant productivity gains for high volume insert use.
Offers significant productivity gains for high volume insert use.



Size	Pitch	Item #
Metric Coarse		
M10	1.5	RCM87511015
M3	0.5	RCM8751315
M4	0.7	RCM8751415
M5	0.8	RCM8751515
M6	1	RCM8751615
Metric Coarse - Mandrel		
M8	1.25	RCM8751815
M12	1.75	RCM875712
M3	0.5	RCM87573
M4	0.7	RCM87574
M5	0.8	RCM87575
M6	1	RCM87576
M8	1.25	RCM87578
Metric Coarse - Nozzle		
M10	1.5	RCM87691015
M12	1.75	RCM87691215
M16	2	RCM876916 ▲
M3	0.5	RCM8769315 ▲
M4	0.7	RCM8769415 ▲
M5	0.8	RCM8769515 ▲
M6	1	RCM8769615 ▲
M8	1.25	RCM8769815 ▲
NC		
NC 2	56	RCM85510215 ▲
NC 4	40	RCM85510415 ▲
NC 6	32	RCM85510615 ▲
NC 8	32	RCM8551215 ▲
NC 12	24	RCM85511215 ▲
NC - Mandrel		
NC 4	40	RCM855304
NC 6	32	RCM855306
NC 8	32	RCM85532

Size	Pitch	Item #
NF - Mandrel		
NF 1/4	28	RCM85544
NF - Nozzle		
NF 5/16	24	RCM8258515 ▲
NF 10	32	RCM8558315 ▲
NF 1/4	28	RCM8558415 ▲
UNC - Mandrel		
UNC 2	56	RCM855302 ▲
UNC 12	24	RCM855312 ▲
UNC 10	24	RCM85533
UNC 1/4	20	RCM85534
UNC - Nozzle		
UNC 5/16	18	RCM8257515 ▲
UNC 3/8	16	RCM8257615 ▲
UNC 1/2	13	RCM8257815 ▲
UNC 6	32	RCM85570615 ▲
UNC 12	24	RCM85571215 ▲
UNC 8	32	RCM8557215 ▲
UNC 10	24	RCM8557315 ▲
UNC 1/4	20	RCM8557415 ▲
UNF - Mandrel		
UNF 5/16	24	RCM82545 ▲
UNF 10	32	RCM85543
UNF - Mandrel		
UNF 7/16	20	RCM8258715 ▲

Hand Tools Electrical Power Tools



This type of RECOIL™ tool is ideal for installing inserts in small production runs or in areas where compressed air or electricity are not available and offers a quicker alternative to the simple hand installation tool.

The RECOIL™ tool is suitable for use when installing free running and locking inserts.



Size	Pitch	Item #
Metric - Hex Drive		
M2.2	0.4	RC55027
M2.5	0.45	RC55257
UNC - Hex Drive Mandrel		
UNC 1/4	20	RC53047
UNC 5/16	18	RC53057
UNC 3/8	16	RC53067
UNC 7/16	14	RC53077
UNC 1/2	13	RC53087
UNC 2	56	RC53527
UNC 3	48	RC53537
UNC 4	40	RC53547
UNC 6	32	RC53567
UNC 8	32	RC53587
UNC 10	24	RC53607

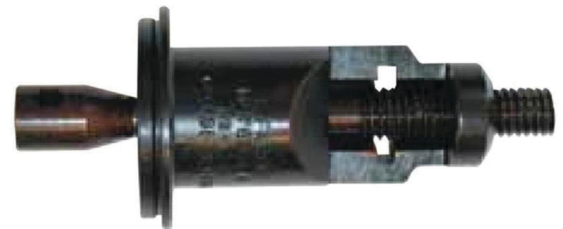
Size	Pitch	Item #
UNF - Hex Drive Mandrel		
UNF 1/4	28	RC54047
UNF 5/16	24	RC54057
UNF 3/8	24	RC54067
UNF 7/16	20	RC54077
UNF 1/2	20	RC54087
UNF 3/4	16	RC54120 ▲
UNF 10	32	RC54607

Hand Tools Front End Assembly



This type of RECOIL™ tool is ideal for installing inserts in small production runs or in areas where compressed air or electricity are not available and offers a quicker alternative to the simple hand installation tool. The RECOIL™ tool is suitable for use when installing free running and locking inserts.

For use with RECOIL Power Tool Install.



Size	Pitch	Item #
Metric		
M2.2	0.45	RC55010
M16	2	RC55160 ▲
M2.5	0.45	RC55250
M8	1	RC57080 ▲
M10	1.25	RC57100 ▲
M12	1.5	RC57120 ▲
M12	1.25	RC58120 ▲
Metric - Mandrel		
M16	2	RC55169
M2.5	0.45	RC55259
M10	1.25	RC57109 ▲
M12	1.25	RC58129 ▲

Size	Pitch	Item #
NC		
3/8	16	RC53060
5/8	11	RC53100 ▲
3/4	10	RC53120 ▲
2	56	RC53520
12	24	RC53620
NC - Nozzle		
2	56	RC53528 ▲
UNC - Mandrel		
5/8	11	RC53109 ▲
3/4	10	RC53129 ▲
UNF		
3/8	24	RC54060 ▲
3/8	24	RC54069
6	40	RC54560 ▲

Tangless Tooling Pre Winder



Ideal for installing inserts in small production runs or in areas where compressed air or electricity are not available.

The RECOIL™ tool is suitable for use when installing free running and locking inserts.



Size	Pitch	Item #
Pre Winder - Metric		
M3	0.5	RC55032U
M4	0.7	RC55042U
M5	0.8	RC55052U
M11	1.5	RC55112U
M2.5	0.45	RC55252U
M8	1	RC57082U
M10	1	RC58102U
M12	1.25	RC58122U
M12	1.75	RC2KPHM12 ▲
M5		RC2KPHM5 ▲
M4		RCTL55041
M5		RCTL55051
M6		RCTL55061
M8		RCTL55081
M10		RCTL55101
M12		RCTL55121
M2.5		RCTL55251

Size	Pitch	Item #
Pre Winder - UNC		
10	24	RC53602U
12	24	RC53622U
2	56	RC53522U
3	48	RC53532U
5	40	RC53552U
#2	56	RCTL53521
#4	40	RCTL53541
#6	32	RCTL53561
#8	32	RCTL53581
Pre Winder - UNF		
10	32	RC54602U
3	56	RC54532U ▲
4	48	RC54542U
6	40	RC54562U
8	36	RC54582U
#10	32	RCTL54601

Tangless Tooling Air Tooling



RECOIL™ pneumatic powered installation tooling uses a standard air supply to install fasteners at a much higher rate than a manual installation tool or prewinder tool. This tool is ideal for installation of medium-to-large quantities of inserts, especially when used in combination with strip feed. Offers significant productivity gains for high volume insert use



Size	Pitch	Item #
Air Tooling (Front End Assembly) - Metric		
M10	1.5	RC2KPAM10 ▲
M12	1.75	RC2KPAM12 ▲
M3	0.5	RCTL55030
M4	0.7	RCTL55040
M5	0.8	RCTL55050
M6	1	RCTL55060
M8	1.25	RCTL55080
M10	1.5	RCTL55100
M12	1.75	RCTL55120
M2.5	0.45	RCTL55250

Size	Pitch	Item #
Air Tooling (Front End Assembly) - UNC		
UNC #2	56	RCTL53520
UNC #4	40	RCTL53540
UNC #6	32	RCTL53560
UNC #8	32	RCTL53580
Air Tooling (Front End Assembly) - UNF		
UNF 5/16	24	RCTL54050
UNF 3/8	24	RCTL54060
UNF #10	32	RCTL54600

Tangless Tooling Hex Electric - Free Running



RECOIL™ Hand/Electric tooling can be used in either manual or electric mode. The electric version uses a small motor to install fasteners at a much higher rate than a manual installation tool or pre-winder tool.

This tool is ideal for installation of medium-to-large quantities



Size	Pitch	Item #
Hex Electric - Metric		
M8		RC2KIPM8 ▲
M3		RCTL55032
M4		RCTL55042
M5		RCTL55052
M6		RCTL55062
M8		RCTL55082
M10		RCTL55102
M12		RCTL55122
M2.5		RCTL55252
Hex Electric Mandrel - Metric		
M10		RC2KHEML10M ▲
M12		RC2KHEML12M ▲
M2.5		RC2KHEML25M ▲
M3		RC2KHEML3M ▲
M4		RC2KHEML4M ▲
M5		RC2KHEML5M ▲
M6		RC2KHEML6M ▲
M8		RC2KHEML8M ▲
M3		RCTL55037M
M4		RCTL55047M
M5		RCTL55057M
M6		RCTL55067M
M8		RCTL55087M
M10		RCTL55107M
M12		RCTL55127M
M2.5	2.5	RCTL55257M

Size	Pitch	Item #
Hex Electric Installation Tool - Metric		
M3	0.5	RC2KHEMF3 ▲
M4	0.7	RC2KHEMF4 ▲
M6	1	RC2KHEMF6 ▲
M4	0.7	RCTL55047
M5	0.8	RCTL55057
M6	1	RCTL55067
M8	1.25	RCTL55087
M10	1.5	RCTL55107
M12	1.75	RCTL55127
M14	2	RCTL55147
M16	2	RCTL55167
M2.5	0.45	RCTL55257
Hex Electric - UNC		
UNC 5/16	18	RCTL53052
UNC 3/8	16	RCTL53062
UNC #2	56	RCTL53522
UNC #4	40	RCTL53542
UNC #6	32	RCTL53562
UNC #8	32	RCTL53582
Hex Electric Mandrel - UNC		
UNC 5/16	18	RCTL53057M
UNC 3/8	16	RCTL53067M
UNC #2	56	RCTL53527M
UNC #4	40	RCTL53547M
UNC #6	32	RCTL53567M

Size	Pitch	Item #
UNC #8	32	RCTL53587M
Hex Electric Installation Tool - UNC		
UNC 5/16	18	RC2KHEC5 ▲
UNC 3/8	16	RC2KHEC6 ▲
UNC 5/16	18	RCTL53057
UNC 3/8	16	RCTL53067
UNC 1/2	13	RCTL53087
UNC #2	56	RCTL53527
UNC #4	40	RCTL53547
UNC #6	32	RCTL53567
UNC #8	32	RCTL53587
UNC #10	32	RCTL54607
UNC #10	32	RCTL54607L
Hex Electric - UNF		
UNF 1/4	28	RCTL54042
UNF 10	32	RCTL54602
UNF 3/8	24	RCTL54062
UNF 5/16	24	RCTL54052
Hex Electric Mandrel - UNF		
UNF #10	32	RCTL54607M
UNF #10	32	RCTL54607LM
Hex Electric Gauge Holder		
Handle		RCTL5000



Size	Pitch	Item #
Hex Drive Mandrel - Metric		
M3	0.5	RC55037
M4	0.7	RC55047
M5	0.8	RC55057
M6	1	RC55067
M8	1.25	RC55087
M10	1.5	RC55107
M12	1.75	RC55127
M10	1	RC58107
M12	1.5	RC58127

Size	Pitch	Item #
Removal Electric Tool - UNC		
UNC #2	56	RCTL53523
UNC #2	56	RCTL53524
UNC #4	40	RCTL53543
UNC #4	40	RCTL53544
UNC #6	32	RCTL53563
UNC #6	32	RCTL53564
UNC #8	32	RCTL53583
UNC #8	32	RCTL53584



Tangless Tooling Replacement Kits



Tangless Inserts Replacement PAWL Kits

Designed to offer the same reliable thread strengthening whilst minimizing the risk of losing a 'tang' associated with tanged inserts.



Size	Pitch	Item #
Replacement Kits - Metric		
M3		RCTL55032K
M4		RCTL55042K
M5		RCTL55052K
M6		RCTL55062K
M8		RCTL55082K
M10		RCTL55102K
M12		RCTL55122K
M14		RCTL55142K
M16		RCTL55162K
M2.5		RCTL55252K

Size	Pitch	Item #
Replacement Kits - UNC		
1/4	20	RC2KIPC4K ▲
1/4	20	RCTL53042K
5/16	18	RCTL53052K
3/8	16	RCTL53062K
#2	56	RCTL53522K
#4	40	RCTL53542K
#6	32	RCTL53562K
#8	32	RCTL53582K

Size	Pitch	Item #
Replacement Kits - UNF		
#10	24	RC2KIPC3K ▲
#10	24	RCTL53602K
1/4	28	RCTL54042K
#10	32	RCTL54602K

Air Driver Kits



For installation of both Tanged and Tangless thread inserts, the REC-10K with air motor includes small and large adaptors to fit RECOIL™ Front End Assemblies (FEA) from M2.5 to M16 or #2-56 – 5/8", and an adaptor to suit 1/4" hex drive mandrels.

The RECOIL™ range of power tooling ensures consistent high volume thread insert installation for a variety of applications. Offers significant productivity gains for high volume insert use.



Description	Size	Pitch	Item #
Air Driver Kit			
Electric Front End Assembly Adaptor			RCREC12ADP ▲
REC-10K Tune Up Kit			RCREC10KTK ▲
REC-12 Plug 220V			RCREC12CORDAUS ▲
Electric Driver			RCREC12AUS
Air Driver Kit - Spare Parts			
Front Nozzle	M12	1.75	RC55128
Front End Assembly Mandrel - Metric	M12	1.75	RC55129
Front End Assembly Mandrel - UNC	UNC 12	24	RC53629
Airmotor Small Adapter			RCNRHL1409 ▲
Airmotor Large Adapter			RCNRHL1410 ▲

Battery Driver Kits



For installation of both Tanged and Tangless thread inserts, the REC-10K with air motor includes small and large adaptors to fit RECOIL™ Front End Assemblies (FEA) from M2.5 to M16 or #2-56 – 5/8", and an adaptor to suit 1/4" hex drive mandrels.

The REC-20 Battery Driver is a lightweight portable battery powered driver for small production and hard to reach tapped hole applications. Operates either vertically or horizontally in two speeds.



Description	Size	Pitch	Item #
Battery Driver Kit			
Battery Tool			RCREC20AUS
Battery Driver Kit - Spare Parts			
1/4" Hex Chuck With Key			RCCK10ACHEX ▲
REC-20 Power Cable			RCREC20CORDAUS ▲
REC-20 Charger 3.6V LI-ION			RCC1011018 ▲
REC-20 Spare Battery			RCB30111815

Accessories Re-Grip



RECOIL™ Re-Grip is a Silicone carbide solution assists with the quick and easy removal of broken or damaged bolts, screws and nuts by improving grip of wrenches, spanners and other tools.

15ml easy apply tube.

Helps remove or tighten all types of screws including damaged screws.



Description	Item #
Re-Grip 15ml Bottle	RC11111





www.recoiltools.com.au